



the
ODDfellows SINCE 1810
making friends, helping people

events **diary**

Heart of England District

April - September 2019





Afternoon Tea – Sunday 28 July

Welcome to the latest edition of your Events Diary for Heart of England District Oddfellows.

As a local District of a national membership organisation called the Oddfellows, we offer you a great opportunity to make new friends and enjoy a variety of activities. We also provide our members with a range of advice and support services when you need them. We are basically a group of friends brought together through shared interest in socialising, making friends and helping people. This issue features details of all our upcoming events.

Everyone is welcome at Oddfellows events. Even if you are not a member, we want to extend an invitation to you and your friends to attend any of our events that take your fancy and we like to think that we can guarantee you a good time.

Contact Details

District Secretary: Yvette Glover

Telephone: 01926 424112

Email:

yvette.glover@oddfellows.co.uk

Address: Oddfellows Hall, 6
Clarence Terrace, Warwick Street
Leamington Spa CV32 5LD

District Office Opening Hours

Wednesday 10am – 2pm

Friday 10am – 2pm

Other times can be arranged by calling the office.

The building and office are closed on Bank Holidays and between Christmas and New Year.

There are three function rooms available for hire. There are stair lifts and the building has free wi-fi.

A bit about us

The Oddfellows is a friendly society with Branches across the UK. Through friendship and social events, we help our members get more enjoyment out of life, and offer care, advice and support in times of need. Find out more at www.oddfellows.co.uk or call 0800 028 1810.

Oddfellows Hall

Swimming Pool

The pool is only open to fully paid up members. £3 per adult and 50p for children aged 6-16 years. Please note that when the club is open, alternative access can be obtained via the second blue door on Portland Street.



Swimming Pool Times

Monday and Tuesday 9am - 12.30pm

Wednesday and Friday 9am - 2pm

The pool is not open on Thursday, evenings or weekends.

The Oddfellows Club

Wednesday and Friday - 10am - 2pm The club is not open on the evenings.

Share the friendship – enjoy the rewards!

Refer a Friend

Did you know that the Society runs a Refer a Friend scheme?

When the first friend you've recommended has joined, we'll send you a £10 Love2Shop voucher as a thank you. There are different reward levels, so you'd receive your next reward - £60 in Love2Shop vouchers - after recruiting five friends in total.*



www.oddfellows.co.uk

To refer a friend, call Membership on **0800 028 1810**, visit our Members' Area at **www.oddfellows.co.uk** or fill in a Refer a Friend form available from your Branch Secretary.

Terms and conditions apply*

The Refer a Friend offer cannot be used in conjunction with any other membership offer. For full terms and conditions, visit **www.oddfellows.co.uk/offers**.

March 2019

Wednesday 13 - Leigh & Knightley and Okens Talk, 7.30pm

Joint Branch meeting with a talk by Barry Franklin and Tom Lewin 'Entertainment in Leamington'. This will also be the District Officers Visit. There will be refreshments and a raffle afterwards. The evening starts at 7.30pm. All welcome. **Address:** Oddfellows Hall, 6 Clarence Terrace, Warwick Street, Leamington Spa CV32 5LD. **Cost:** Free. Contact Sue on 01926 429312.

Coach Outing to Worcester

Earl of Warwick

Thursday 14 March, 9.30am

Depart from Oddfellows Hall, 6 Clarence Terrace, Warwick Street, Leamington Spa CV32 5LD



A coach outing to Worcester. The coach will leave from Oddfellows Hall at 9.30am and return for 5pm. All welcome, bring along friends who are not members and let them try one of the events we arrange. **Cost:** £12 per person. Further details from Julie on 01926 313309.

Monday 25 - A Talk (Guys Cliffe), 7.45pm

'It all started with a name on the War Memorial' a talk by Pat Goode. In the Oddfellows Club. Refreshments will be served and there will also be a raffle. All welcome. **Address:** Oddfellows Hall, 6 Clarence Terrace, Warwick Street, Leamington Spa CV32 5LD. **Cost:** Free. Contact Yvette on 01926 424112.

April

Monday 1 - Leamington and Guys Cliffe Joint Social Evening, 7.45pm

Leamington and Guys Cliffe are holding a joint social night with games commencing at 7.45pm in the Oddfellows Club. Light refreshments will be served and there will be a raffle. Therefore there will not be a separate Guys Cliffe meeting on Monday 22 April.

Address: Oddfellows Hall, 6 Clarence Terrace, Warwick Street, Leamington Spa CV32 5LD. **Cost:** Free. Contact Yvette on 01926 424112.



Coach Trip

Leigh & Knightley

Thursday 11 April, 9.30am

Depart from Oddfellows Hall, 6
Clarence Terrace, Warwick Street,
Leamington Spa CV32 5LD



A coach trip to the National Brewery Centre at Burton-on-Trent with a guided tour of the brewery. In the afternoon there will be a visit to Burton-on-Trent District Hall for a cup of tea and a piece of cake. The coach will depart from Oddfellows Hall in Leamington Spa at 9.30am and then return for around 5pm. Book by Monday 1 April. **Cost:** The cost will be £26 which includes entrance and tour of the brewery. £14 non-refundable deposit when booking. For further details please contact Sue on 01926 429312.

**Tuesday 16 - Easter Egg Hunt and Quiz (Okens),
7.30pm**

There will be an Easter Egg hunt and a quiz at Hill Close Gardens, Warwick. There will also be an Easter raffle. The evening will commence at 7.30pm. **Address:** Hill Close Gardens, Bread and Meat Close, Warwick CV34 6HF. **Cost:** Free. Contact Sue on 01926 429312.



May

**Monday 13 - Leamington and Guys Cliffe Joint Lunch,
12 noon**

A joint lunch outing with Leamington and Guys Cliffe lodges. The lunch is at the Plough and Harrow, Whitnash, Leamington Spa. Book by Tuesday 7 May. **Address:** Plough and Harrow Pub, Whitnash Road, Leamington Spa CV31 2HX. **Cost:** As per menu. For booking please contact Pat Goode on 01926 313170.



May

Thursday 16 - Coach Trip to Weston Super Mare (Earl of Warwick), 9am

A coach outing to Weston Super mare. Free time when you get there. The coach will depart from the hall in Leamington Spa at 9am and return for approximately 6pm. The cost is £14.50 per person and the amount is non-refundable. All welcome. Feel free to invite friends and family that may not be members. Book by Tuesday 30 April. **Address:** Oddfellows Hall, 6 Clarence Terrace, Warwick Street, Leamington Spa CV32 5LD. **Cost:** £14.50 per person, non-refundable. For further details contact Julie on 01926 313309.



June

Wednesday 12 - A Talk (Leigh & Knightley), 7.30pm

A talk by Sheila Woolf entitled - Here come the girls a very special relationship. The talk will commence at 7.30pm at the hall. All welcome and there will be a raffle. **Address:** Oddfellows Hall, 6 Clarence Terrace, Warwick Street, Leamington Spa CV32 5LD. **Cost:** Free. Contact Sue on 01926 429312.

Saturday 15 - Day Trip to York (Leigh & Knightley), 8am

A day trip to York. Free time once you get there. The coach will depart from Oddfellows hall in Leamington Spa and return approximately 7pm. **Address:** Oddfellows Hall, 6 Clarence Terrace, Warwick Street, Leamington Spa CV32 5LD. **Cost:** £18 per person, non-refundable. Contact Sue on 01926 429312.



Tuesday 18 - Cheese Tasting Challenge (Okens), 7.30pm

Get your taste buds going with a cheese tasting challenge evening. This will be at Hill Close Gardens, Warwick. It will commence at 7.30pm and there will also be a raffle. **Address:** Hill Close Gardens, Bread and Meat Close, Warwick CV34 6HF. **Cost:** Free. Contact Sue on 01926 429312.



Monday 24 - Talk 'Elephants in Royal Leamington Spa' (Guys Cliffe), 7.45pm

A talk by Alan Goldstraw in the Okens room, Oddfellows Hall 7.45pm for 8pm start. Light refreshments will be served in the club and there will be a raffle. All welcome. **Address:** Oddfellows Hall, 6 Clarence Terrace, Warwick Street, Leamington Spa CV32 5LD. **Cost:** Free. Contact Yvette on 01926 424112.

July

Heart of England District Church Service

Sunday 7 July, 3pm

St Mary's Church, Church Lane,
Cubbington, Leamington Spa CV32 7JT



Come along and join us for our District Church Service. It is being held at St Mary's Church Cubbington and will be followed by tea at the village hall. All members are welcome and feel free to invite friends who are not members. If you want to join us for tea after then please contact the district office before the service to let them know for catering purposes. **Cost:** Free. You can contact the office on 01926 424112.

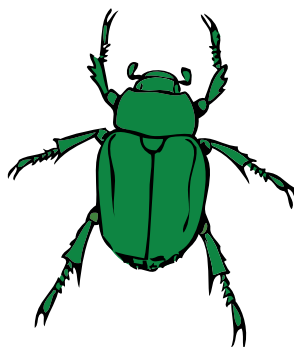
Tuesday 16 - Leigh & Knightley and Okens Joint Picnic Evening, 7.30pm

A joint picnic evening at Hill Close Gardens, in Warwick. Bring your own picnic and drink. Tea/coffee will be available. There will also be a raffle. All welcome. Sue on 01926 429312. **Address:** Hill Close Gardens, Bread and Meat Close, Warwick CV34 6HF. **Cost:** Free. Contact Sue on 01926 429312.



Monday 22 - Funny Beetle Drive (Guys Cliffe), 7.45pm

Funny beetle drive in the Oddfellows Club at Oddfellows Hall. There will be light refreshments and a raffle. All welcome. **Address:** Oddfellows Hall, 6 Clarence Terrace, Warwick Street, Leamington Spa CV32 5LD. **Cost:** Free. Contact Yvette on 01926 424112.



July

Sunday 28 - Afternoon Tea, 2pm

Come along for a proper afternoon tea. Homemade sandwiches, scones and cakes. All proceeds go to the District Chairman's chosen charity. Avoid disappointment by booking early as we only have limited spaces. All welcome. Book by Friday 19 July.

Address: Oddfellows Hall, 6 Clarence Terrace, Warwick Street, Leamington Spa CV32 5LD. **Cost:** £6 per person. Contact Yvette on 01926 424112.



August

Oddfellows Brass Band Concert

Saturday 3 August, 3pm

Address: Methodist Church, Dale Street, Leamington Spa CV32 5HL.

Come along and enjoy some wonderful brass band music and a wonderful band. The programme will be a mix of classical, popular and film music. All members and non members are welcome. Refreshments will be served in the interval. Tickets available from the district office in advance or on the door on the day. **Cost:** £7 for members, £7.50 for guests. Contact Yvette on 01926 424112.



Monday 5 - Leamington and Guys Cliffe Joint Branch Talk, 7.45pm

A talk by Paul Springthorpe on 'Victorian Piers'. The meeting will be held in the Okens room at Oddfellows Hall. This will also be a district officers visit to the lodges. Light refreshments will be served and there will be a raffle. **Address:** Oddfellows Hall, 6 Clarence Terrace, Warwick Street, Leamington Spa CV32 5LD. **Cost:** Free. Contact Yvette on 01926 424112.

Wednesday 14 - Games Night (Leigh & Knightley), 7.30pm

A short business meeting followed by board games. This will take place at Oddfellows Hall in Leamington Spa. All welcome. **Address:** Oddfellows Hall, 6 Clarence Terrace, Warwick Street, Leamington Spa CV32 5LD. **Cost:** Free. Contact Sue on 01926 429312.



September - Friendship Month

Tuesday 17 - Okens and Leigh & Knightley Joint Harvest Supper, 7.30pm

A joint Harvest Supper at Hill Close Gardens, Warwick. Cost will be £6 per person and this will include a pudding. Please bring either fruit or vegetables for the raffle. All welcome. **Address:** Hill Close Gardens, Bread and Meat Close, Warwick CV34 6HF. **Cost:** £6 per person. Please contact Sue on 01926 429312 for catering purposes.



Monday 23 - Bingo Night (Guys Cliffe), 7.45pm

Bingo night in Oddfellows Club commencing at 7.45pm. Light refreshments will be served and a raffle will be held. All welcome. **Address:** Oddfellows Hall, 6 Clarence Terrace, Warwick Street, Leamington Spa CV32 5LD. **Cost:** Free. Contact Yvette on 01926 424112.



Oddfellows Summer Holiday

Discover the best of Hampshire's Coastline with Oddfellows members and friends at the Sinah Warren Coastal Hotel.

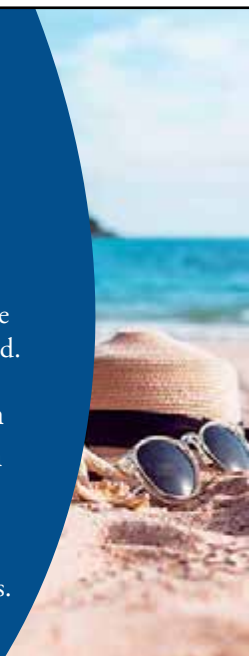
Situated on Hayling Island, Sinah Warren is a large, comfortable hotel surrounded by elegant gardens and spectacular view of Langstone Harbour.

8 – 12 July 2019:
4 nights (half-board)

Breakfast and three-course evening meals are included.

Standard rooms from only £280 per person

With evening entertainment, activities and use of leisure facilities.



To book call Warner's on **0330 1009 772**
(Booking reference 4272269) and quote ODDFELLOWS



Oddfellows Members: Do you need help?

None of us know what is around the corner...

Local Care and Welfare Support

To request contact from a Welfare Visitor and for local help and information about Branch benefits and benevolence contact Yvette on **01926 424112** or email **yvette.glover@oddfellows.co.uk**.

Oddfellows Advice Line

Call 0800 0149 821*

(free to callers from any landline or mobile number)

Monday - Friday, 9.30am - 4.30pm

Email: oddfellows@manchestercab.org



Run by Citizens Advice for Oddfellows members, you can access free, confidential, independent advice on welfare benefits, money and debt issues, consumer problems, housing, fuel bills, employment issues and many other issues.

*The Oddfellows cannot provide legal advice and accepts no liability whatsoever for advice provided by Citizens Advice, which is an independent advice agency. If you have any queries about the advice you have received or wish to make a complaint then you should contact Citizens Advice directly. Citizens Advice operate a formal complaints process.

Care and Welfare Helpline

Call 0800 0149 822

(free to callers from any landline or mobile number)

Monday to Thursday, 9.30am - 4.30pm, Friday, 9.30am - 4pm

Email: care@oddfellows.co.uk

Run by the Oddfellows Care and Welfare Department, you can access information and guidance on issues such as accessing health and care services, supported housing, support for carers, and planning for later life. The helpline will try and identify any Oddfellows benefits or services in the community which may be of help to you.

**Visit our website page at www.oddfellows.co.uk/benefits/care
for care and welfare information**



This quote recently caught my eye. Many of us are guilty of being caught up in the day-to-day. We often get so focused on the task at hand that our proverbial blinkers stop us from having a REALLY good look around.

I'm sure many of us could benefit from slowing down a little, to take stock of those daily pick-me-up moments – people asking how you are, having a coffee made for you, being at the bus stop at exactly the right time... Those simple things.

I must say that us Oddfellows are pretty good at making the most of the everyday. We need little excuse to get together. A cup of tea and a biscuit, or a chance to grab a lunch, usually does the trick. We're fortunate to have this opportunity to go along to one of our Branch events and spend time with others. Regular, friendly catch-ups, or just sitting with company, really does fuel happiness.

It saddens me that there are people out there who don't get the chance to spend time with others, and who don't have anyone to fall back on when times get tough.

It might be that they've had a change of personal circumstance and the people they used to mix with have moved on, or they just don't see them as often. It happens all too frequently, and it's shocking how quickly your confidence gets knocked and you drift into chronic loneliness.

If there's anyone you know that could do with some friendly company or support, please don't forget to mention the Oddfellows and welcome them to your next get-together. There's no hard sell in this at all. If they like it, then brilliant. If we're not their cup of tea, then they know we're here if they change their mind.

So for 2019, it's right for us to continue to celebrate the extraordinary things in our calendar – Friendship Month, AMC and our major HA Andrews Memorial Fund donation. But let's not forget to celebrate the wonderful everyday at the Oddfellows, too.

Thank you for every cup of tea shared, caring phone call made and idea given at a meeting. Thank you for each pot washed, new face welcomed and friendly email written. These little things make a huge difference to people's everyday lives and the running of our Society. Despite life's rush, rest assured, they do not go unnoticed.

I wish you and your families every happiness – big and small – for 2019.

Jane Nelson, CEO

Members of Distinction

Whether through the old Portraits Scheme, or the recently launched Making a Difference Award – we love to recognise and celebrate members who go over-and-above in their support of the Society and its work.

So thank you to three of Portraits 2018's final winners Gerald, Miriam and Adrian for everything you do for the Oddfellows. We appreciate it.



*Gerald Gordon Baxter
Nene and Welland District*

Meet Gerald, member of the Nene and Welland District, who was singled out for his long-standing support to the Society at many different levels – from local Branch through to International Conference.

Some of Gerald's notable positions held over his seven decades as an Oddfellow include Noble Grand and Vice Grand

for his Branch, Provincial Grand Master for his District, 28 years' service as a District and Branch Trustee, as well as Past President (1988-1989) at East Anglia Group Conference.

Reflecting on his 71-year relationship with the Oddfellows, Gerald shared: "I liked the idea of what Oddfellowship stood for – Friendship, Love and Truth.

"We all need friends that we can turn to when we need them. There are times when we all need support and the Oddfellows has been there for me and my family."



*Miriam Witcomb
Heart of England District*

The Oddfellows is very fortunate to have people such as Miriam in its membership. She embodies the Society's humanitarian spirit through her commitment to helping others.

Since joining in her 40s, Miriam has served as Noble Grand for Leigh and Knightly Branch, as well as Heart of England District Oddfellows Club President and Trustee.

However, what sets Miriam apart is her devotion to fundraising and volunteering. Year-round, she knits items to sell and organises regular tombolas to raise money for her Provincial Grand Master's chosen charities.

For over 20 years, she has provided fellow members with care and support in their times of need as Branch Welfare Officer.

In the words of her District Committee of Management, Miriam is 'a much loved member'. And as a Society, we couldn't agree more!

Introduced to the Oddfellows by his father at age 16, Adrian's constant energy has kept him incredibly busy and active in his District and regional group conference.

Since 2006, he has been a member of Beds and Bucks District Committee of Management, in which he serves as Trustee and second-time Deputy Provincial Grand Master. It was during his tenure as Provincial Grand Master in 2009 that his career reached new heights – as he undertook a charity indoor skydive for the East Anglian Air Ambulance. Other appreciated contributions include his time as Past Worthy Master of the Provincial Lodge of Past Grands, Midland Group



*Adrian Taylor
Beds and Bucks District*

Conference President and, while studying at university in Birmingham, attendance at monthly Branch meetings and District annual meetings.

Speaking about his time with the Oddfellows, he explained: "It provides excellent opportunities to be able to meet people at home and overseas. An example of this is when I travelled around Australia and New Zealand and visited Lodges in Brisbane and Wellington."

Well done and thank you to all our members who've featured as portraits over the years. We can't wait to continue celebrating members who go the extra mile in supporting our Society through a Making A Difference Award.



On your marks, get set, parkrun

There aren't many things left in life that are free, but one growing phenomenon that is completely gratis is parkrun.

The 5km community events take place in parks each Saturday morning, but parkrun is more than a way of keeping fit, it's a way of making friends, being part of a community, and even inspiration to travel the world.

Parkrun isn't a race. There are no winners, volunteer Tail Walkers ensure that nobody finishes last, and the emphasis is on regular participation rather than performance. There are more than 550 5km courses in the UK and 1,600 across the world, with more than 235,000 adults and juniors taking part on a good weekend globally. Additionally, there are 250 junior parkruns on Sunday mornings for 4-14 year-olds and their families that are 2k in distance.

You don't need to be a top athlete. At any event you will find parents with pushchairs, dog walkers and people who have never taken part in organised physical activity before. If you use a wheelchair, then you're also welcome,

but it's probably worth checking the individual course you fancy doing is accessible with the organisers before setting off.

The events have a great reputation for being friendly and often there's a catch-up after the event at a local café over tea.

It's easy to get started. Register on the website [**www.parkrun.org.uk**](http://www.parkrun.org.uk) and you will be given an individual barcode. Print it out and turn up at the event you fancy taking part in. The events all start at 9am in the UK, except for in Scotland and Northern Ireland where they kick off at 9.30am.

If you don't fancy walking or running, then volunteering at the events is a brilliant way to meet people and give back to the community. Each event is self-organising and has its own team of volunteers who would be very pleased to have an extra pair of hands.

Get in touch with your local parkrun to find out how you can volunteer [**www.parkrun.org.uk/events/events**](http://www.parkrun.org.uk/events/events)



**MANCHESTER
UNITY**
Credit Union Limited



Protected



JOIN US TODAY

SAVE WITH US AND BORROW WITH US

- PEOPLE HELPING PEOPLE - AS SIMPLE AS THAT
- LEARN MORE ABOUT US
- HOW THE CREDIT UNION CAN HELP YOU AND YOUR BRANCH

Call us on **0161 214 4629** or visit
www.manchesterunitycu.co.uk

Manchester Unity Credit Union Ltd. Is authorised by the Prudential Regulation Authority (PRA) and regulated by the Financial Conduct Authority (FCA) and the Prudential Regulation Authority, FRN 213401. Registered Office: Oddfellows House, 184 -186 Deansgate, Manchester, M3 3WB. www.manchesterunitycu.co.uk

meetings and members only events

Every Oddfellows Branch is run independently by a committee of members. Regular meetings are held to discuss matters such as Branch finances, membership and member support. See below for further meeting details.

Trustees/District Committee of Management Meetings

Meet on the first Thursday of the month at the Oddfellows Hall.

7 March

Past Grands Meetings

These are all Fridays all held at the Oddfellows Hall.

Welfare Meetings

Meet on the third Monday of the month at the Oddfellows Hall.

Monday 16 September

Heart of England District Meeting

Saturday 9 March - District Meeting, 10.30am

The annual district meeting. This meeting commences at 10.30am and is an all day meeting with a lunch break and at the end of the meeting the installation of new District Officers. Come along and find out how your district is run. All members welcome. Address: Oddfellows Hall, 6 Clarence Terrace, Warwick Street, Leamington Spa CV32 5LD. Cost: Free. Contact Yvette on 01926 424112.

Leamington

Meeting starts at 7.30pm at Oddfellows Hall, 6 Clarence Street, Warwick Street, Leamington Spa CV32 5LD. Have you ever tried a ceremonial meeting? Why not come along and try one. You will be very welcome.

Monday 4 March, Monday 3 June, Monday 1 July and Monday 2 September.

Monday 1 April - Leamington and Guys Cliffe - Joint Meeting, 7pm

Joint social meeting with Guys Cliffe. A social evening with games. Commencing 7.45pm in the Oddfellows Club. Light refreshments will be served and there will be a raffle. All welcome. Contact Yvette on 01926 424112.

Okens

Wednesday 15 May - Leigh & Knightley and Okens - Ceremonial Meeting, 7.30pm

Come along and find out what a ceremonial meeting is like. The meeting will be held at Oddfellows Hall in Leamington Spa. There will also be a raffle after the meeting. Address: Oddfellows Hall, 6 Clarence Terrace, Warwick Street, Leamington Spa CV32 5LD. Contact Sue on 01926 429312.

meetings and members only events

Leigh & Knightley

Wednesday 15 May - Leigh & Knightley and Okens - Ceremonial Meeting, 7.30pm

Come along and find out what a ceremonial meeting is like. The meeting will be held at Oddfellows Hall in Leamington Spa. There will also be a raffle after the meeting. Address: Oddfellows Hall, 6 Clarence Terrace, Warwick Street, Leamington Spa CV32 5LD. Cost: Free. Contact Sue on 01926 429312.

Wednesday 14 August - Leigh & Knightley - Business Meeting and Games Night, 7.30pm

A short business meeting followed by board games. This will take place at Oddfellows Hall in Leamington Spa. All welcome. Address: Oddfellows Hall, 6 Clarence Terrace, Warwick Street, Leamington Spa CV32 5LD. Cost: Free. Contact Sue on 01926 429312.

Earl of Warwick

Meeting starts at 2pm at Oddfellows Hall, 6 Clarence Street, Warwick Street, Leamington Spa CV32 5LD.

Friday 21 June - District Officers Visit

The District Officers will visit the lodge in the Okens room at Oddfellows Hall. All welcome. There will be refreshments and a raffle after the meeting. Cost: Free. Contact Yvette on 01926 424112.

Friday 19 July - Business and Social Meeting

A business and social meeting in the Okens room at Oddfellows Hall. All welcome. There will be refreshments and a raffle in the meeting. Contact Yvette on 01926 424112.

Friday 16 August - Business and Social Meeting

Earl of Warwick will be holding a business and social meeting. All welcome. There will be refreshments and a raffle. Contact Yvette on 01926 424112.

branch contacts

Earl of Warwick Branch

Meet on the third Friday of the month in the afternoon at the Oddfellows Hall.

Social Secretary: Julie Winup

Telephone: 01926 313309

Address: 31 Anderson Drive, Whitnash, Leamington Spa CV31 2RN.

Guys Cliffe Branch

Meet on the fourth Monday of the month in the evening at Oddfellows Hall.

Social Secretary: Pat Goode

Telephone: 01926 313170

Address: 11 Wilnecote Grove, Leamington Spa CV31 1YR.

Leamington Branch

Meet on the first Monday of the month in the evenings at the Oddfellows Hall.

Social Secretary: Mary Ray-Clues

Telephone: 01926 334723

Address: 4 Marloes Walk, Leamington Spa CV31 1PA.

Leigh & Knightley Branch

Meet on the second Wednesday of the month in the evening at the Oddfellows Hall.

Social Secretary: Sue Newton **Telephone:** 01926 429312

Address: 37 Landor Road, Whitnash, Leamington Spa CV31 2JY.

Oakens Branch

Meet on the third Tuesday of the month in the evening at Hill Close Gardens, Bread and Meat Close, Warwick CV34 6HF.

Social Secretary: Sue Newton

Telephone: 01926 429312

Address: 37 Landor Road, Whitnash, Leamington Spa CV31 2JY.

Edmondscote Provincial Lodge of Past Grands

Meet on the second Friday of the month in the evening at the Oddfellows Hall (September - April). (For qualified members only).

Secretary: Vic Partridge

Telephone: 01926 493741

Address: 75 Wathen Road, Warwick CV34 5BB.

At a glance

March 2019

Mon 4	Leamington - Ceremonial Meeting	7.45pm
Sat 9	District Meeting	10.30am
Wed 13	Leigh & Knightley and Okens - Talk	7.30pm
Thurs 14	Earl of Warwick - Coach Outing to Worcester	9.30am
Mon 25	Guys Cliffe - A Talk	7.45pm

April

Mon 1	Leamington and Guys Cliffe - Joint Meeting	7.45pm
Thurs 11	Leigh & Knightley - Coach Trip	9.30am
Tues 16	Okens - Easter Egg Hunt and Quiz	7.30pm

May

Mon 13	Leamington and Guys Cliffe - Joint Lunch	12 noon
Wed 15	Leigh & Knightley and Okens - Ceremonial Meeting	7.30pm
Thurs 16	Earl of Warwick - Coach Trip to Weston Super Mare	9am

June

Mon 3	Leamington - Ceremonial Meeting	7.30pm
Wed 12	Leigh & Knightley - A Talk	7.30pm
Sat 15	Leigh & Knightley - Day trip to York	8am
Tues 18	Okens - Cheese Tasting Challenge	7.30pm
Fri 21	Earl of Warwick - District Officers Visit	2pm
Mon 24	Guys Cliffe - Talk 'Elephants in Royal Leamington Spa'	7.45pm

Booking and Cancellations

Please remember the importance of early booking for all events to avoid disappointment or cancellation due to lack of support. Please note that a place is not guaranteed at any event until full payment has been received where necessary.

At a glance

July

Mon 1	Leamington - Ceremonial Meeting	7.30pm
Sun 7	Heart of England District Church Service	3pm
Tues 16	Leigh & Knightley and Okens - Joint Picnic Evening	7.30pm
Fri 19	Earl of Warwick - Business and Social Meeting	2pm
Mon 22	Guys Cliffe - Funny Beetle Drive	7.45pm
Sun 28	Afternoon Tea	2pm

August

Sat 3	Oddfellows Brass Band Concert	3pm
Mon 5	Leamington and Guys Cliffe - Joint lodge talk	7.45pm
Wed 14	Leigh & Knightley - Business Meeting and Games Night	7.30pm
Fri 16	Earl of Warwick - Business and Social Meeting	2pm

September - Friendship Month

Mon 2	Leamington - Ceremonial Meeting	7.30pm
Tues 17	Okens and Leigh & Knightley - Joint Harvest Supper	7.30pm
Mon 23	Guys Cliffe - Bingo Night	7.45pm

Join in the conversation

Share your news, start a conversation or simply stay up-to-date! If you're on Facebook, don't forget to like and follow our Society social media pages.

'We've a really friendly and supportive online network of thousands of Oddfellows members from across the UK and the world,' explained the Social Media team. 'Our official Twitter and Facebook pages are regularly updated with topical national Oddfellows and Branch news. We also love reading your comments and posts!'

Find us at:  facebook.com/HeartOfEnglandOddfellows