

January - June 2026



the **ODDfELLOWS** SINCE 1810  
making friends, helping people

# out & about

## Derbyshire Peak



Walks



Bowling



Day Trip



Social



Quizzes



Talks



Coffee  
Morning



Dining Out

## Dear Members and Friends

Welcome to our Out and About Guide for January to June 2026.

We have a busy diary of events organised for you, which I hope you will find enjoyable. Ken and I are looking forward to be able to join you on some of the trips.



I enjoyed the Leeds trip in September. The guided tour of the city was especially informative and funny as well!

My charity for this year is Ashgate Hospice. I was invited to go on a guided tour with a few other members of the Committee of Management in August this year. The work the staff and volunteers do there and the care they give is absolutely amazing.

In October, we as a District hosted the Annual General Meeting of the Midland Group Conference. This is a group that is made up of all the Oddfellows Districts in the middle of the country and covers an area from North Wales and Chester in the west across to our district in the east and then down to Derby, Coventry, Birmingham and Worcester in the south and Severn / Trent and Mid Staffordshire in the middle. We were treated to a demonstration of a lodge meeting held with full ritual with all the officers and their supporters

dressed in full regalia. Members of our District then demonstrated the modern alternative version. It gave me great pleasure to see my husband, Ken, installed as Vice President of the Conference for the forthcoming year.

The Oddfellows via the East Anglian Group Conference supports the RNLI (Royal National Lifeboat Institution) Lifeboat at Sheringham. My old friend, Brother Geoffrey Sheldon, asked me to mention that if you are ever in that part of the county, please call in and see the boat.

There is a lot of work that goes on behind the scenes organising events, outings and the like and I would like to personally thank Trudy and her assistant Lynn for everything they do, not forgetting the volunteers at coffee mornings and the walk leaders.

I would like to give a warm Oddfellows welcome to our new Prov CS (Provincial Corresponding Secretary), Tracey, who I am sure a lot of you have already met or spoken to on the phone. She is very quickly getting to grips with the Oddfellows methods of working.

If you have any questions relating to your membership, benefits or social plans, please get in touch with us using any of our contact details.

I look forward to meeting you soon.  
Yours fraternally

**Barbara Lupton**  
**Provincial Grand Master (Chairman)**  
**and The Committee of Management**

## Contact Details

**Address:** 126 Saltergate, Chesterfield S40 1NG

**Facebook:** DerbyshirePeakOddfellows

**Office Opening Hours:** Our office is open to visitors Wednesdays 9.30am – 3.30pm. Other times can be arranged if needed. Please let us know if you would like to call in.

**District Secretary:** Tracey Thornton

**Telephone:** 01246 273076

**Email:** [tracey.thornton@oddfellows.co.uk](mailto:tracey.thornton@oddfellows.co.uk)



I'm very happy to have joined the Branch as Prov CS. My first few weeks have been eventful and a learning curve, but I'm very much enjoying getting to know everyone. I have a background in finance and had a long career with Royal Mail. Outside of work, I love travel and walking with my husband and our dog Bailey as well as spending time with my family and friends. I look forward to meeting more of you at future events.

**For more information or to book any event please call the Social Organiser**

**Social Events Organiser:** Trudy Ford

**Telephone:** 01246 273076

**Mobile:** 07933 626720

**Email:** [trudy.ford@oddfellows.co.uk](mailto:trudy.ford@oddfellows.co.uk)



**Social Events Host:** Lynn Jones

**Telephone:** 01246 273076

**Email:** [lynn.jones@oddfellows.co.uk](mailto:lynn.jones@oddfellows.co.uk)



## Join the conversation @OddfellowsUK

Share your news, start a conversation or simply stay up-to-date! If you're on Facebook, make sure you've liked and followed our Oddfellows social media pages.

Find us at  **OddfellowsUK**

Please note that all events must be booked in advance with the Social Organiser.

# Regular Event

## Ten Pin Bowling Gang

 10.45am  TBC



First Tuesday  
of the month

Join our bowling gang. Meet at Chesterfield Bowl for 10.45am to bowl at 11am, with snacks or lunch too. Cost varies depending on numbers and current offers. Chesterfield Bowl, Storforth Lane, Chesterfield, Derbyshire S40 2TU. Contact Trudy on 01246 273076.

6 January  
3 February

3 March  
7 April

5 May  
2 June

## Pop in Coffee Morning

 11am  £2



First Wednesday  
of the month

Join us for our pop-in coffee morning. We will enjoy coffee, cakes and chat along with a quiz or two. Club Chesterfield, Chester Street, off Ashgate Road, Chesterfield S40 1DL. Contact Trudy on 01246 273076.

7 January  
4 February - with Speaker  
4 March- with Fundraising Game

1 April - with 'Guess Who' Game  
6 May  
3 June

## Crafting Hour/Garden Pottering

 11am  £1



Second Wednesday  
of the month

Pop along to our office for this small group. Bring your chosen craft and enjoy coffee, biscuits and a natter. Alternatively, you can prune and care for the Oddfellows garden pots. 126 Saltergate, Chesterfield, Derbyshire S40 1NG. Contact Trudy on 01246 273076.

14 January  
11 February

11 March  
8 April

13 May  
10 June



# Regular Event

## Table Top and Board Games



10am



£1



Come and try some familiar and unfamiliar games. Or bring your own and teach us all something new. No knowledge of games needed and everyone welcome. 10am to 12 noon. 126 Saltergate, Chesterfield, Derbyshire S40 1NG. Contact Trudy on 01246 273076.

**28 January**  
**25 February**  
**25 March**

**22 April**  
**27 May**  
**24 June**

**Fourth Wednesday  
of the month**



## Rambling On Walking Group



10.30am



Walk Free  
Pay your own meal



Our friendly walking group walks for roughly 60-90 minutes at a steady pace. We then visit a nearby pub or café for lunch. Pay for whatever you order in the café. Location to be confirmed. Contact Trudy on 01246 273076.

**2 January**  
**6 February**

**6 March**  
**3 April**

**1 May**  
**5 June**

**First Friday  
of the month**



## Best Foot Forwards Walking Group



10am



Walk Free  
Pay your own meal



Our longer walking group walks for 2.5 to three hours, before enjoying lunch or tea and cakes nearby. Location to be confirmed. Contact Trudy on 01246 273076.

**16 January**  
**20 February**

**20 March**  
**17 April**

**15 May**  
**19 June**

**Third Friday  
of the month**



# January

FRI  
09

## Friday Night Social - La Dolce Vita Lambarellis



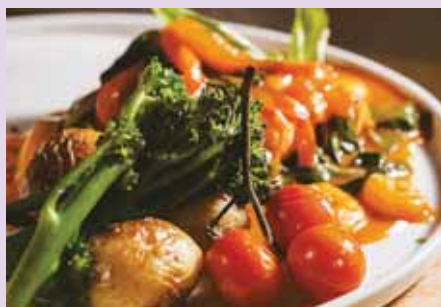
6pm



As per menu



Join us for authentic Italian food using recipes influenced by the Head Chef's Sardinian background. £5 deposit and pre-order required. Book by Tuesday 30 December 2025. La Dolce Vita Lambarellis Italian, 7-9 Chatsworth Road, Chesterfield S40 2AH. Contact Trudy on 01246 273076.



WED  
21

## Coffee Morning with Speaker - 'Men in Sheds'



11am



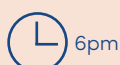
£2



Join us for our coffee morning - tea, cakes and chat. Our speaker is Rob Whitehead from community woodworking group 'Men in Sheds'. Rob will tell us about the group, their community projects and show us some of their creations. Club Chesterfield, Chester Street, off Ashgate Road, Chesterfield S40 1DL. Contact Trudy on 01246 273076.

THURS  
22

## Wine Tasting with Nibbles and Quiz



6pm



Members £15 Guests £18



Come along to our DIY wine tasting evening, with tasty nibbles and a wine-themed quiz at Peak Lodge. Cost includes wine tasters, nibbles and quiz with prizes. Maximum 24 places. Book by Thursday 8 January 2026. 126 Saltergate, Chesterfield, Derbyshire S40 1NG. Contact Trudy on 01246 273076.



# January

## MON 26 Dining in Derbyshire – The Blue Bell Inn and Chantry Restaurant



Lunch at the Blue Bell, A 15th century chantry inn serving fresh home cooked food and cask ales. A special menu will apply. £5 deposit required. Book by Friday 9 January 2026. The Blue Bell Inn and Chantry Restaurant, Station Road, North Wingfield, Chesterfield S42 5HY. Contact Trudy on 01246 273076.



## Learn, have fun, and stay in touch from home

We've online events for all  
to enjoy. Give one a try.

To see what's coming up visit  
[www.oddfellows.co.uk/events](http://www.oddfellows.co.uk/events)

# February

## WED 04 Pop in Coffee Morning with Speaker



Join us for our pop-in coffee morning. We have a speaker this time. Peter Bower will be talking to us about SSAFA – The Armed Forces Charity. Club Chesterfield, Chester Street, off Ashgate Road, Chesterfield S40 1DL. Contact Trudy on 01246 273076.



## TUES 10 Chesterfield Football Club Lunch and Tour



Join us for a two-course lunch at the football club, followed by a private tour of the club. Book by Friday 23 January 2026. Chesterfield Football Club SMH Stadium, Sheffield Road, Chesterfield S41 8NZ. Contact Trudy on 01246 273076.



# February

## THURS 12 John Smedley Factory Tour



10am



Tour £8, Lunch  
as per menu



For over 240 years, John Smedley has been a pioneer in designing, manufacturing and producing high-quality, luxurious knitwear. Join us for a tour of their factory and a visit to the shop, followed by lunch at The Jug and Glass in Lea Mills at 12.30pm. Cost: £8 for the tour, lunch pay for what you order. Book by Friday 20 February 2026. John Smedley, Lea Mills, Lea Bridge, Matlock, Derbyshire DE4 5AG. Contact Trudy on 01246 273076.

## FRI 13 Friday Night Social - The Fox and Goose at Wigley



6pm



As per  
menu



Historic rustic inn offering real ales, gourmet burgers and British gastro pub fare. £5 deposit and pre-order required. Book by Thursday 29 January 2026. The Fox & Goose Inn, Pudding Pie Hill, Chesterfield S42 7JJ. Contact Trudy on 01246 273076.



## WED 18 Coffee Morning with Speaker - True Crime Investigators



11am



£2



Join us for our coffee morning - tea, cakes and chat. Our speakers are True Crime Investigators with their talk - Killer at Large: In Pursuit of a Multiple Murderer. Club Chesterfield, Chester Street, off Ashgate Road, Chesterfield S40 1DL. Contact Trudy on 01246 273076.



## MON 23 Dining in Derbyshire - The Gate Inn at Tansley



12.30pm



As per  
menu



The Gate Inn is a family friendly pub and restaurant situated in the picturesque village of Tansley, serving locally brewed beer and traditional pub food. £5 deposit and pre-order may be required. Book by Thursday 5 February 2026. The Gate Inn, The Knoll, Tansley, Matlock DE4 5FN. Contact Trudy on 01246 273076.



# February

## THURS 26 Litton Coffee Morning



Join us for a coffee morning at Litton Village Hall. A lovely countryside drive and a change of scenery. Coffee, cake, quiz and chat. Litton Village Hall, 3 Church Lane, Litton SK17 8RA. Contact Trudy on 01246 273076.

# March

## WED 04 Pop in Coffee Morning with Fundraising Game



Join us for our pop-in coffee morning. We will enjoy coffee, cakes and chat, along with a charity fundraising game. Please bring an extra £2 in change if you would like to play. Club Chesterfield, Chester Street, off Ashgate Road, Chesterfield S40 1DL. Contact Trudy on 01246 273076.

## FRI 13 Friday Night Social - The Rose and Crown, Barlborough



Serving home-cooked meals, cask beers and a welcoming atmosphere. £5 deposit and pre-order required. Book by Thursday 26 February 2026. The Rose & Crown, High Street, Barlborough, Chesterfield S43 4ET. Contact Trudy on 01246 273076.

# March

## WED 18 Coffee Morning with Speaker - Terry - Scarsdale Hospital



Join us for our coffee morning - tea, cakes and chat. Our speaker is Terry Bradley, who will be talking to us about the history of Scarsdale Hospital. Club Chesterfield, Chester Street, off Ashgate Road, Chesterfield S40 1DL. Contact Trudy on 01246 273076.

## MON 23 Dining in Derbyshire - The Canal at Bullbridge



Located in the Derbyshire village of Bullbridge in the Amber Valley. This country pub, kitchen and microbrewery, serves hearty pub classics, comforting pies, freshly cut sandwiches, plus a range of ales and beers brewed in house at their 14 Lock Brewery. £5 deposit and pre-order required. Book by Thursday 5 March 2026. The Canal at Bullbridge, 30 Bullbridge Hill, Bullbridge, Derbyshire DE56 2FL. Contact Trudy on 01246 273076.

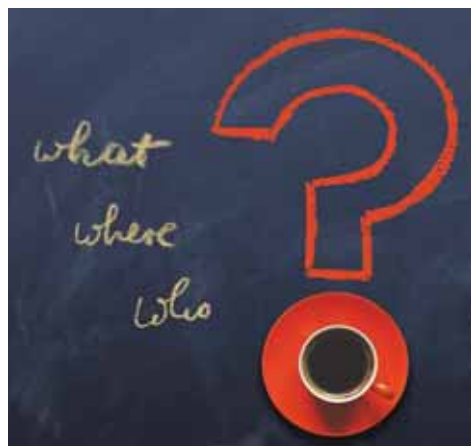


# April

## WED 01 Pop in Coffee Morning with 'Guess Who' Game



Join us for our pop-in coffee morning. We will enjoy coffee, cakes and chat. If you can, bring along a photo of you in your younger days. We will lay them all out and try and guess who is who! Club Chesterfield, Chester Street, off Ashgate Road, Chesterfield S40 1DL. Contact Trudy on 01246 273076.



## WED 15 Coffee Morning with Speaker - Speaker to be confirmed



Join us for our coffee morning - tea, cakes and chat. Speaker to be confirmed nearer the time. Club Chesterfield, Chester Street, off Ashgate Road, Chesterfield S40 1DL. Contact Trudy on 01246 273076.

## THURS 23 Thursday Night Social - Taste Restaurant at Chesterfield College



The Taste Restaurant and bar is located within Chesterfield College and is fully run by their students - both front and back of house. Serving high-quality food and drink. Book by Tuesday 31 March 2026. Taste Restaurant at Chesterfield College, Infirmary Road, Chesterfield, Derbyshire S41 7NG. Contact Trudy on 01246 273076.



## MON 27 Brunch in Derbyshire - Matlock Garden Centre



For a change, we will have a brunch in Derbyshire at The Gallery Restaurant at Matlock Garden Centre. They offer hot and cold food, including breakfast, which is served till 11.30am. Why not stay for a wander around the garden centre afterwards? Pre-order and £5 deposit may be required. Book by Friday 10 April 2026. The Gallery Restaurant at Matlock Garden Centre, 5 Nottingham Road, Matlock DE4 5FR. Contact Trudy on 01246 273076.

# April

THURS  
30

## A Visit to Attenborough Nature Reserve



10.30am



Parking £5, Cost of refreshments



A day out for everyone at this accessible nature reserve. Meet at 10.30am for coffee and a look around the visitor centre, before taking a gentle walk (longer routes available). Meet for lunch at 1pm. Cost: £5 parking fee applies, pay for your drinks/food. Book by Friday 10 April 2026. Attenborough Nature Reserve, Barton Lane, Attenborough, Nottinghamshire NG9 6DY. Contact Trudy on 01246 273076.



# May

FRI  
08

## Friday Night Social - Rikshawaz Asian Bar and Grill



6pm



As per menu



Join us at this stylish new Asian bar and grill, recently opened in Clay Cross, serving classic and modern dishes with rave reviews. Book by Thursday 23 April 2026. Rikshawaz Asian Bar & Grill, Unit 6, The Parade, Bridge Street, Clay Cross S45 9NG. Contact Trudy on 01246 273076.



# May

THURS  
14

## The Great British Car Journey



10am



Entry £15 plus lunch and driving fee

Enjoy a guided tour of 150+ modern British classics. 'The Great British Car Journey' tells the story of the rise and fall of the British motoring industry from the early 1900s to the turn of the century. If there is enough interest it may be possible to arrange to drive a car (larger cost applies for this). Please let us know if you're interested in doing so. Lunch in their on site café afterwards. Cost: £15 for entry plus lunch, driving fee applies if arranged. Book by Friday 24 April 2026. The Great British Car Journey, Derwent Works, Ambergate, Derbyshire DE56 2HE. Contact Trudy on 01246 273076.



# May

## WED 20 Coffee Morning with Speaker - Grave Expectations

L 11am

£ £2



Join us for our coffee morning – tea, cakes and chat. There will be a short talk from Beccy and Katy from ‘Grave Expectations’ Funeral Directors. They will be talking to us about the setting up of their new business. Club Chesterfield, Chester Street, off Ashgate Road, Chesterfield S40 1DL. Contact Trudy on 01246 273076.

## TUES 26 Dining in Derbyshire - The Woodyard

L 12.30pm

£ As per menu



Join us for lunch on a Tuesday for a change. The Woodyard in Bakewell is a relaxed and friendly restaurant, serving fresh home-made food. £5 deposit and pre-order required. Book by Friday 15 May 2026. The Woodyard, Coombs Road, Bakewell DE45 1AQ. Contact Trudy on 01246 273076.

## THURS 28 Litton Coffee Morning

L 11am

£ £2



Join us for a coffee morning at Litton Village Hall. A lovely countryside drive and a change of scenery. Coffee, cake, quiz and chat. Litton Village Hall, 3 Church Lane, Litton SK17 8RA. Contact Trudy on 01246 273076.

# June

## SAT 06 Annual Summer Lunch - The Merchant's Yard, Tideswell

L 12 noon



£ Members £37, Guests £40

Join us for our annual summer get-together at this lovely restaurant and event venue in the Peak District, well known for good cuisine and events. There will be a three-course meal, with arrival prosecco or soft drink and coffee afterwards, plus a table quiz and raffle for our chosen charity. Invitations will be sent out near the date. There is ample street parking nearby, but an overflow car park at a nearby site can be made available. Please car share where possible. Book by Saturday 16 May 2025. The Merchant's Yard, St Johns Road, Tideswell, Derbyshire SK17 8NY. Contact Trudy on 01246 273076.



# June

FRI  
12

## Friday Night Social - The Boat Inn, Pinxton

L 6pm

£ As per menu



Family owned and run pub and restaurant, nestled on the bankside in the historic location of Pinxton Wharf. £5 deposit and pre-order required. Book by Friday 22 May 2026. The Boat Inn, Pinxton Wharf, Pinxton, Nottinghamshire NG16 6PN. Contact Trudy on 01246 273076.



WED  
17

## Coffee Morning with Speaker - Speaker to be confirmed

L 11am

£ £2



Join us for our coffee morning - tea, cakes and chat. Speaker to be confirmed. Club Chesterfield, Chester Street, off Ashgate Road, Chesterfield S40 1DL. Contact Trudy on 01246 273076.

THURS  
25

## Day Trip to Manchester

L 9am

£ TBC



Join us for a day trip to Manchester. We will take a bus or boat tour, visit the new Manchester museum, enjoy lunch and tour the sights. Details, including transport, to be arranged nearer the time. Train or minibuss travel. Book by Friday 22 May 2026. Manchester City Centre, Manchester M1. Contact Trudy on 01246 273076.



MON  
29

## Dining in Derbyshire - Oakhill Hotel at Cromford

L 12.30pm

£ As per menu



A return visit to this stunning Georgian hotel, located in historic Cromford. Enjoy pub classics in the beautifully restored dining room. Pre-order and £5 deposit may apply. Book by Friday 12 June 2026. Oakhill, Intake Lane, Cromford DE4 3RH. Contact Trudy on 01246 273076.





*Here are some pictures of our members enjoying our social events over the last year. Come along and join the fun!*



# Make the most of your membership



## Your membership provides you with a great range of benefits...

**Standard £25 a year membership\* gives you access to...**

- Local social events
- Care & Welfare Helpline
- Oddfellows Travel
- Oddfellows news by email
- Branch Care & Welfare Support
- Oddfellows Citizens Advice Line
- Money saving partner offers
- Benevolence Grants
- Emergency Financial Aid (Household)
- Convalescence & Carer Support (after 2 years' membership)
- Accidental Death Benefit
- Legal Aid Scheme
- Educational & Apprenticeship Awards
- 24/7 access to our historical online archive

**£35 a year membership\* provides you with additional benefits of...**

- Optical benefit of up to £30 every second year of membership (after 1 year's membership)
- Dental benefit of up to £30 every membership year (after 1 year's membership)

For more information visit: [www.oddfellows.co.uk/benefits](http://www.oddfellows.co.uk/benefits).

\*Terms and conditions apply to all member benefits and services.

For full details, visit [www.oddfellows.co.uk/terms-conditions](http://www.oddfellows.co.uk/terms-conditions), or call us on 0800 028 1810.

# Join in with our neighbours!

Don't forget, as an Oddfellow, you're welcome to join other branches for their social events. A few months ago, we visited Bradford Oddfellows on a trip to Yorkshire Sculpture Park. Emma (Social Organiser for Bradford) has also been our coffee morning speaker on two occasions. Here are a few events that our neighbours are hosting that may be of interest to you. Ask Trudy for more information.

## Derby Derwent Valley District Branch

### Friday 16 January – Chocolate Bingo

Bingo books available to purchase on the day. There will be refreshments of jacket potato with various fillings. Oddfellows Hall, 32 Charnwood Street, Derby DE1 2GU. 6.30pm to 8.30pm. Cost: £6.



### Saturday 24 January – Film Night with Fish and Chips

Choose from three fantastic films, while tucking into your favourite fish and chips. Oddfellows Hall, 32 Charnwood Street, Derby DE1 2GU. 2.30pm to 4.30pm. Cost: £10.

## Erewash Valley District Branch

### Thursday 26 February – Workshop Dine Out

The Dukes Beefeater, View, High Grounds Road Ryton, Worksop S80 3GN at 1pm. Pay for what you order.

## South Yorkshire & North Derbyshire District Branch

### Thursday 22nd January – Christmas Fuddle

The Brentwood Rotherham 12 noon. Let's banish those January blues with a Christmas fuddle! The Brentwood will provide us with a fabulous hot and cold buffet, with unlimited teas and coffees. We will provide you with games a quiz and plenty of fun and laughter. £10 per member or £15 guests.

### Wednesday 25 March – Hikers – Eckington Woods, Sheffield

Join us for a walk around this popular wood and then afterwards for a home-cooked lunch at the dog-friendly Bridge Inn pub. 11am.



### Thursday 14 May – Travels By Train – Cleethorpes

Who fancies a trip to the seaside? Meeting times to be confirmed.





## **Bradford District Branch**

### **Friday 15 May - Visit to Harewood House**

Meet at 11am. £18 for access to the house and grounds. Harewood House, Harewood, Leeds LS17 9LG.

### **Friday 30 January - Oddies Wanderers Walk Cliffe Castle**

Walk around the grounds and, weather permitting, heading up through the woods (a steep path) back to the cafe. Cliffe Castle museum will be open for those who want to explore. Cliffe Castle Museum, Spring Gardens Lane, Keighley BD20 6LJ at 11am.



## **Nottingham Trent District Branch**

### **Wednesday 11 February - Robin Hood Private Bespoke Tour by Ezekial Bone**

Meet Robin Hood and discover the truth of the 'Hooded Man'! Follow the trail of historical facts around Nottingham City Centre and learn about one of the greatest stories ever told. Visit landmarks like the Council House, Old Market Square, the Theatre Royal and other, quirky, hidden surprises, finishing with a visit to Ye Olde Trip to Jerusalem where Robin Hood invites you to drink ales with him. Meet at The Cross Keys pub, Fletcher Gate NG1 2GJ (Google Maps) at 11am. Cost: £12.



# Committee of Management

## Member Profile – Sandra Johnson

**It is almost three years since I decided to join the Oddfellows and I have enjoyed attending meetings, as well as joining in the wide range of social activities. When I joined, I hoped that it would enable me to widen my social network and make new friends and I haven't been disappointed. I have met and made friends with some very special people.**

Outside of Oddfellows, I do some voluntary work, walk with my dog and friends, knit and do jigsaws and, when the opportunity presents, enjoy birdwatching. After attending a couple of committee meetings, I decided to become a member of the Committee of Management. It is

an opportunity to find out more about the inner workings of the organisation and it's ethos, as well as being able to give something back.



---

## Junior Oddfellows

**We have several Junior Oddfellows in our branch, ranging from infants up to 18 years old, when they can choose to continue as a Standard or Extra Benefits member. Our Junior Members even receive a Christmas gift card.**

Pictured is our youngest Junior Member, Lennon, with his Grandma, Jean. Ask Tracey or Trudy for more information about Junior Membership.





# Welcome to our new members

We love to meet new people and we'd like to say a big welcome to all of our new Oddfellows. It's great to see new faces – don't forget you can always bring a friend! Invite them along to see what we are all about.



## Receiving the Oddfellows Welcome and hearing Oddfellows Degrees

**Our formal Oddfellows welcoming ceremony has become a popular feature of some of our coffee mornings. This is a simple spoken welcome which can be given to new members of our branch, if they choose to have it. It's a nod to our history and the way that the Oddfellows meetings were conducted in the past when ritual and ceremony were an important part of our meetings.**

Some of our members have also gone on to hear the Oddfellows lectures – a series of short spoken word pieces that you simply affirm to agree with at the end. They relay the morals and ethics of our society, and again, a nod to our past and the pride we have in the Oddfellows.

If this is something that you are interested in and haven't experienced yet, please let Trudy or Lynn know and we can arrange for Ken Lupton to come along to a coffee morning to welcome more members officially.



# Getting to know our members

## Alan and Elaine Kirk

Alan and Elaine are regulars at the coffee mornings and meals. They are both keen ten pin bowlers and enjoy the monthly bowling group. Elaine is a member of Walton WI (Women's Institute) and goes to chair-based Pilates.



For many years, they were both members of Chesterfield Diabetes Group, raising thousands of pounds for the charity and making people more aware about Diabetes. Alan is Chairman of the Grassmoor and Hasland Men in Sheds woodworking group - who meet to enjoy crafting with wood. Together, they have helped other groups and charities, including Ashgate Hospice. If you would like to know more about Men in Sheds, have a word with Alan. They also welcome women!

## Janet Taylor

Janet joined the Oddfellows around three years ago with her close friend, also called Janet. She has been a regular volunteer for Chesterfield Credit Union, until her retirement from the charity this year. The



Credit Union is an amazing resource for anyone who may struggle with conventional banks. They offer flexible saving and low-cost loans.

Aside from the Oddfellows, Janet also enjoys activities with the U3A and spending time with her family.

## Anne Davis

Anne is a relatively new member of our group and enjoys our coffee mornings and events. She is also a volunteer tour guide at Haddon Hall. Our group have benefitted from this on two occasions: once when Anne was kind enough to be our speaker to talk about the history of the Hall and again when we visited Haddon Hall and she was our very own tour guide.



In her spare time, cooking and gardening are her 'go to' activities, especially to avoid stress! Anne has even produced her own cookbook, sold to raise funds for Sheffield Children's hospital – copies are available.

She also enjoys knitting and sewing as she loves to keep her hands busy, and fly fishing, as well as family history research – she has traced the Davis name all the way back to the mid 1600s. Anne is also a keen traveller, and has visited 26 countries in her lifetime.

# Our Charity Fundraising



**Our chosen charity for the current year is Ashgate Hospice and our fundraising efforts are going very well thanks to our members. Our summer raffle and ongoing charity games will all contribute to a great total for the year.**

Ashgate Hospice offer support throughout North Derbyshire for patients, their loved ones and professionals. Last year, they cared for 1855 people in their own

homes, 317 people in their inpatient unit at Old Brampton and 651 people with counselling and bereavement support. This year, their funding is in crisis and we need to do all we can to support them. Adele from the Hospice came to our coffee morning earlier this year to talk about the work that the hospice do. We also joined in the 'Go Pink for Ashgate' campaign at a recent coffee morning, where members wore pink and gave a donation to the cause.



---

## Annual Summer Lunch

**Our annual summer lunch will take place on Saturday 6 June. It's a lovely mid-year celebration and we are looking forward to seeing as many of you there as possible.**

We will be trying a new venue this year – The Merchant's Yard Restaurant and Rooms in Tideswell. This venue has a great reputation for fabulous food and events.

There will be a table quiz and a raffle for our chosen charity for 2026/2027, which will be announced in April. The Merchant's Yard, St Johns Road, Tideswell, Derbyshire SK17 8NY.



# A look at some of our recent events

## Leeds Overnight Trip

We enjoyed a fantastic overnight trip to Leeds in September. On arrival, we took a walk through Kirkgate Market and the Corn Exchange on our way to a lovely pub lunch. After lunch, we were joined by our walking tour guide, Mike Hampshire, who led us through the city's Victorian Quarter, Minster, buildings of note and galleries, all while filling us in on the fascinating history of Leeds. A few of us then took a VR Voyage on the Titanic before we enjoyed an evening meal together.

The next day we walked through the central shopping area, then took a water taxi to the Leeds Armouries. After a late lunch, we returned to the city centre and some visited the 'Art of the Brick' Lego exhibition, which was amazing!

A great time was had by all. Good food, good entertainment, great company.



## Trentham Gardens

We had a great day out to Trentham Gardens recently. It was so lovely to walk around the beautiful gardens and lake, follow the fairy trail, explore the maze and of course, visit the shops. We even managed to squeeze in lunch.





## Gladstone Pottery

Some of our members were keen to visit Gladstone Pottery, so off we went in spring. We had a very informative day, learning about the history of the pottery and watching live demonstrations. Plus of course, lunch in the café!



## Petanque Taster Session

In spring, we returned to Eastwood Park Petanque Club for a taster session. It was great to have so many members come along and try the game and so kind of the team to host us and show us how it's done. Afterwards, we enjoyed drinks and a picnic lunch in the park pavilion and luckily the weather was very kind to us.





## Lunch Club Visits

We have visited both the Asian Association of Chesterfield and the African Caribbean Association of Chesterfield over the last few months, enjoying the cuisine and learning more about the groups. We are very lucky to have these associations in our town and each visit, we learn a little more about the different cultures in our community.



## Litton Coffee Mornings

We are continuously trying to make sure that we provide events for our members who live a little further away from our branch office in Chesterfield. Every couple of months, we have coffee mornings at Litton Village Hall, which always prove popular and are a great chance to meet up with our members from the Peak area.



We also visit different areas for our walks and meals whenever possible.

We'd love to welcome more members from the wider Derbyshire Peak area and are open to any suggestions. Please get in touch if you have any ideas!



## Midland Group Conference

In October, the Derbyshire Peak District hosted the Midland Group Conference Annual Meeting. The Midland Group Conference is made up of 15 affiliated Branches, that covers from North Wales down as far as Bedford and across to Leicestershire.

The purpose of the Conference is to support Branches, share information and deliver training.

The Conference is made up of four Officers – The President, Vice President, Immediate Past President and Secretary (similar to our Branch structure) and Executive Members, 1 per Branch. The Group Conference have Committee

meetings throughout the year, with two main meetings in May and October. At the main meetings, each Branch send an elected number of Deputies.

We were very proud to see our own Ken Lupton elected and installed as the Vice President. Ken will become President of the Midland Group Conference next year.

Around 50 people were present at the meeting, made of Deputies, Past Presidents and Visitors who all enjoyed a buffet lunch and Derbyshire Peak hospitality.



*The installation of the New President and Ken waiting to be installed. Left to right: Brother Adrian Taylor PP, Brother Ken Lupton, Sister Sue Doulton-Smith PGM / PP, Brother Meirion Edwards PP, Sister Christine Lockett, Brother Tony Lockett PGM / PP. Front: Sister Kerry Lockett PP – Installing Officer.*



*The table of Officers. Left to Right: Sister Sandra Loynes IPP, Brother Ken Lupton VP, Sister Christine Lockett President and Sister Denise Turner PP, Conference Secretary, PP = Past President/ PGM = Past Grand Master. VP = Vice President .*



*13 members demonstrating a traditional (formal) Lodge Meeting wearing the full regalia.*



# Oddfellows Members: Do you need help?

**None of us know what is around the corner...**

## Local Care and Welfare Support

Our branch Care and Welfare representatives are Peter Wilkinson and Jean Nelson. If you think you might benefit from this service or would like more information please contact Tracey in the first instance.

## Oddfellows Advice Line

**Call 0800 0149 821\***

(free to callers from any landline or mobile number)

Monday - Friday, 9.30am - 4.30pm

**Email:** [oddfellows@citizensadvicemanchester.org.uk](mailto:oddfellows@citizensadvicemanchester.org.uk)



Run by Citizens Advice for Oddfellows members, you can access free, confidential, independent advice on welfare benefits, money and debt issues, consumer problems, housing, fuel bills, employment issues and many other issues.

\*The Oddfellows cannot provide legal advice and accepts no liability whatsoever for advice provided by Citizens Advice, which is an independent advice agency. If you have any queries about the advice you have received or wish to make a complaint then you should contact Citizens Advice directly. Citizens Advice operate a formal complaints process.

## Care and Welfare Helpline

**Call 0800 0149 822**

(free to callers from any landline or mobile number)

Monday to Thursday, 9.30am - 4.30pm, Friday, 9.30am - 4pm

**Email:** [care@oddfellows.co.uk](mailto:care@oddfellows.co.uk)

Run by the Oddfellows Care and Welfare Department, you can access information and guidance on issues such as accessing health and care services, supported housing, support for carers, and planning for later life. The helpline will try and identify any Oddfellows benefits or services in the community which may be of help to you.

**Visit our website page at [www.oddfellows.co.uk/benefits/care](http://www.oddfellows.co.uk/benefits/care)  
for care and welfare information**

## Unity Mutual: A brand-new website and exciting Oddies member benefits

**Unity Mutual, the financial arm of the Oddfellows, is delighted to have launched a brand-new website.**

The fresh design reflects its updated brand identity, but more importantly, it has been built with accessibility and inclusion at its heart – a continuation of the Oddfellows' ethos.



Whether looking for information on savings, investments or life insurance, the new site is easier to use, clearer to navigate and designed so that everyone can get the most from it.

Unity Mutual has partnered with Recite Me to introduce a full suite of accessibility tools, allowing visitors to customise their browsing experience. These include a text-to-speech function, styling features and translation options, which ensure their online services are available to all –

including those who may face barriers due to disability, neurodivergence or limited English language ability.

James Gilliver, Chief of Operations at Unity Mutual, explained: “Accessibility is extremely important to us at Unity Mutual. Our new website reflects our promise to inclusivity, ensuring all customers can access information in the way that best meets their needs.”

“But it’s not just about accessibility. We’ve also worked hard to make our content clearer and more engaging, so you can feel confident in understanding your financial choices. Our aim is to empower you and your family to make informed decisions about saving for the future.”

An extra reason to take a look is that Oddfellows members can currently benefit from special Guaranteed Investment Bond rates, available exclusively through Unity Mutual.

**To see the new website, its new accessibility features and for more information about its products and rates, go to [www.unitymutual.co.uk/oddfellows](http://www.unitymutual.co.uk/oddfellows), and discover how Unity Mutual can help build a brighter financial future.**



# Thank you for saying 'yes' to friendship

**This Friendship Month, we've been encouraging people to say 'yes' to trying new things, making new friends, and discovering all the brilliant things happening at our Branches throughout the nation.**

It's safe to say, September 2025 has been another fabulous celebration of friendship. The Oddfellows' CEO, Jane Nelson, said: "Friendship Month 2025 has once again demonstrated what the Oddfellows is all about, and I'm thankful of every single

person up and down the country who had been a part of it."

"Saying 'yes' to trying new things can be daunting, but you've all done an excellent job of showing how positive it is to be a part of friendship groups like ours. So, thank you for saying 'yes' to helping make your Friendship Month events a success, whether that's organising events, serving cups of tea, or simply making people feel welcome and comfortable. It all adds up to another wonderful Friendship Month."



*Birmingham Oddfellows*



*Bradford Oddfellows*



*Brighouse and Huddersfield Oddfellows*



*Albert Oddfellows*



*Derbyshire Peak Oddfellows*



*Cambridge Oddfellows*



*Heart of the West Oddfellows*



*Concord Oddfellows*



*Halifax Oddfellows*



*Sudbury Oddfellows*

# Application deadlines approach!

**Whether it's enhancing careers or highlighting fantastic people, the Oddfellows has a number of ways we can give our members a boost – but we can only do so if we hear about them.**

Deadlines for applications to be submitted for two of our wonderful schemes are fast approaching – the Apprenticeship Educational Award and the Making a Difference Awards.

## Apprenticeship Educational Awards



Each year, the Oddfellows grants up to three Apprenticeship Educational Awards, which consist of £250 per year for the duration of the apprenticeship.\*

Eligible members must apply via their Branch. If you, or someone you know, has been an Oddfellows member for five or more years, which includes Young Oddfellows membership, and started or plan to start an apprenticeship in 2025, get in touch with your Branch Secretary.

The Branch's deadline for submitting applications for consideration is **Wednesday 31 December 2025.**

\*Each case is reviewed on personal merit. For previous recipients' stories, details on eligibility and how to apply, visit [www.oddfellows.co.uk/educational-awards](http://www.oddfellows.co.uk/educational-awards)

## Making a Difference Awards



Want to shine a light on those special people at your Branch who go above and beyond? Every Branch has them, so make sure we hear about their brilliance.

Any member can nominate a fellow member, so if there are people at your Branch who make a difference, speak to your Branch Secretary to find out how you can nominate them.

The deadline for Branches to submit their shortlist is **Saturday 31 January 2026**, so get your nominations in as soon as possible so they can be considered.

To find out more about our Making a Difference Awards, the categories, nomination process and the prior winners, go to [www.oddfellows.co.uk/makingadifference](http://www.oddfellows.co.uk/makingadifference)

**If you've missed these deadlines this time don't worry, just make a note for next year!**

# At a glance

Please note that all events must be booked in advance with the Social Organiser.

## January 2026

<b>Fri 2</b>	Rambling On Walking Group	10.30am
<b>Tues 6</b>	Ten Pin Bowling Gang - Chesterfield Bowl	10.45am
<b>Wed 7</b>	Pop in Coffee Morning	11am
<b>Fri 9</b>	Friday Night Social - La Dolce Vita Lambarellis	6pm
<b>Wed 14</b>	Crafting Hour/Garden Pottering	11am
<b>Fri 16</b>	Best Foot Forwards Walking Group	10am
<b>Wed 21</b>	Coffee Morning with Speaker - 'Men in Sheds'	11am
<b>Thurs 22</b>	Wine Tasting with Nibbles and Quiz	6pm
<b>Mon 26</b>	Dining in Derbyshire - The Blue Bell Inn & Chantry Restaurant	12.30pm
<b>Wed 28</b>	Table Top and Board Games Group	10am

## February

<b>Tues 3</b>	Ten Pin Bowling Gang - Chesterfield Bowl	10.45am
<b>Wed 4</b>	Pop in Coffee Morning with Speaker	11am
<b>Fri 6</b>	Rambling On Walking Group	10.30am
<b>Tues 10</b>	Chesterfield Football Club Lunch and Tour	12 noon
<b>Wed 11</b>	Crafting Hour/Garden Pottering	11am
<b>Thurs 12</b>	John Smedley Factory Tour	10am
<b>Fri 13</b>	Friday Night Social - The Fox and Goose at Wigley	6pm
<b>Wed 18</b>	Coffee Morning with Speaker - True Crime Investigators	11am
<b>Fri 20</b>	Best Foot Forwards Walking Group	10am
<b>Mon 23</b>	Dining in Derbyshire - The Gate Inn at Tansley	12.30pm
<b>Wed 25</b>	Table Top and Board Games Group	10am
<b>Thurs 26</b>	Litton Coffee Morning	11am

## March

<b>Tues 3</b>	Ten Pin Bowling Gang - Chesterfield Bowl	10.45am
<b>Wed 4</b>	Pop in Coffee Morning with Fundraising Game	11am
<b>Fri 6</b>	Rambling On Walking Group	10.30am
<b>Wed 11</b>	Crafting Hour/Garden Pottering	11am
<b>Fri 13</b>	Friday Night Social - The Rose and Crown, Barlborough	6pm
<b>Wed 18</b>	Coffee Morning with Speaker - Terry - Scarsdale Hospital	11am
<b>Fri 20</b>	Best Foot Forwards Walking Group	10am
<b>Mon 23</b>	Dining in Derbyshire - The Canal at Bullbridge	12.30pm
<b>Wed 25</b>	Table Top and Board Games Group	10am



# At a glance

## April

<b>Wed 1</b>	Pop in Coffee Morning with 'Guess Who' Game	11am
<b>Fri 3</b>	Rambling On Walking Group	10.30am
<b>Tues 7</b>	Ten Pin Bowling Gang - Chesterfield Bowl	10.45am
<b>Wed 8</b>	Crafting Hour/Garden Pottering	11am
<b>Wed 15</b>	Coffee Morning with Speaker - Speaker to be confirmed	11am
<b>Fri 17</b>	Best Foot Forwards Walking Group	10am
<b>Wed 22</b>	Table Top and Board Games Group	10am
<b>Thurs 23</b>	Thursday Night Social - Taste Restaurant at Chesterfield College	6.30pm
<b>Mon 27</b>	Brunch in Derbyshire - Matlock Garden Centre	10.45am
<b>Thurs 30</b>	A Visit to Attenborough Nature Reserve	10.30am

## May

<b>Fri 1</b>	Rambling On Walking Group	10.30am
<b>Tues 5</b>	Ten Pin Bowling Gang - Chesterfield Bowl	10.45am
<b>Wed 6</b>	Pop in Coffee Morning	11am
<b>Fri 8</b>	Friday Night Social - Rikshawaz Asian Bar and Grill	6pm
<b>Wed 13</b>	Crafting Hour/Garden Pottering	11am
<b>Thurs 14</b>	The Great British Car Journey	10am
<b>Fri 15</b>	Best Foot Forwards Walking Group	10am
<b>Wed 20</b>	Coffee Morning with Speaker - Grave Expectations	11am
<b>Tues 26</b>	Dining in Derbyshire - The Woodyard	12.30pm
<b>Wed 27</b>	Table Top and Board Games Group	10am
<b>Thurs 28</b>	Litton Coffee Morning	11am

## June

<b>Tues 2</b>	Ten Pin Bowling Gang - Chesterfield Bowl	10.45am
<b>Wed 3</b>	Pop in Coffee Morning	11am
<b>Fri 5</b>	Rambling On Walking Group	10.30am
<b>Sat 6</b>	Annual Summer Lunch - The Merchant's Yard, Tideswell	12 noon
<b>Wed 10</b>	Crafting Hour/Garden Pottering	11am
<b>Fri 12</b>	Friday Night Social - The Boat Inn, Pinxton	6pm
<b>Wed 17</b>	Coffee Morning with Speaker - Speaker to be confirmed	11am
<b>Fri 19</b>	Best Foot Forwards Walking Group	10am
<b>Wed 24</b>	Table Top and Board Games Group	10am
<b>Thurs 25</b>	Day Trip to Manchester	9am
<b>Mon 29</b>	Dining in Derbyshire - Oakhill Hotel at Cromford	12.30pm

The Oddfellows is the trading name of The Independent Order of Odd Fellows Manchester Unity Friendly Society Limited, incorporated and registered in England and Wales No. 223F.  
Registered Office: Oddfellows House, 184-186 Deansgate, Manchester M3 3WB