

September 2023 – February 2024
Issue 1



O^{the}DDfellows SINCE 1810
making friends, helping people

out & about

Bury St Edmunds and Colchester District Lodge
Covering Babergh, Castle, Gipping and St Edmundsbury Social Lodges



Friendship



Quiz



Talks



Social



Film



Dinner



Walks



Crafts



Games



Trips



Meet members of the District Lodge Committee 2023-2024.

Welcome to the first edition of your new look District Branch Events Diary and news review

This is the first Events Diary of the Bury St Edmunds & Colchester District Lodge, as you read through you will notice that the Social Organisers at the four Social Lodges with their Social Committees, have been busy arranging the events that cover the next six months. There is a varied selection to keep you entertained and to get involved in around the District. Remember that you can attend any event, however please check with the relevant DSEO,

as for some events booking is essential.

September is our Friendship Month and we encourage any prospective new members to come to events, so please, do bring your friends along and help them find out about the many benefits of being a member. There is always a warm welcome for all, we are happy to meet new faces, Making friends, helping people, it's what we are about.

We look forward to welcoming you to our events.

Tony



Annual District Events

This year's District Sunday Lunch is on Sunday 8 October 2023 at Ashla House Bury St Edmunds. The Church Service is on Sunday 26 November 2023 at All Saints Church Park Road Bury St Edmunds to book places for these events please speak to your Social Organiser or the Secretary Tony Nunn. For more information about the District events, please check the event diary listing.

A bit about us...

The Oddfellows is a friendly society with Branches across the UK. Through friendship and social events, we help our members get more enjoyment out of life, and offer care, advice and support in times of need. Find out more at www.oddfellows.co.uk or call 0800 028 1810.

Branch and Social Lodge Contacts

For more information on our events, and for encouragement and support if attending an event for the first time, please contact your local Social Lodge contact:

Bury St Edmunds and Colchester District Lodge

District Secretary: Tony Nunn

85 Whiting Street, Bury St Edmunds, Suffolk IP33 1NX

Telephone: 01284 754345 **Email:** tony.nunn@oddfellows.co.uk

Babergh Social Lodge ●

Social Events Organiser: Helen Patel

Telephone: 07876 710053 **Email:** helen.patel@oddfellows.co.uk

Care & Welfare Coordinators:

Alan Brockbank **Email:** alan.brockbank@oddfellows.co.uk

Jane Brockbank **Email:** jane.brockbank@oddfellows.co.uk

Telephone: 01787 37605

 **OddfellowsBabergh**

Castle Social Lodge ●

Social Events Organiser and Care & Welfare Coordinator: Diana Randall

Telephone: 01206 330962 **Email:** diana.randall@oddfellows.co.uk

 **OddfellowsCastle**

Gipping Social Lodge ●

Social Events Organiser and Care & Welfare Coordinator: David Randall

Telephone: 01206 330962 **Email:** david.randall@oddfellows.co.uk

 **OddfellowsGipping**

St Edmundsbury Social Lodge ●

Social Events Organiser: Jacky Nunn

Telephone: 01284 755068 **Email:** jacky.nunn@oddfellows.co.uk

Care & Welfare Coordinator: Chrystal Cooper

Telephone: 01284 754345 **Email:** chrystal.cooper@oddfellows.co.uk

 **OddfellowsStEds**

District Events ●

Looking for events and activities in your local area?

Call the office on 01284 754345 to find out more and get involved.

Regular Events in St Edmundsbury

Drop In Afternoon

Second Wednesday



1.30pm



Members £2
Guests £3



Join us for our monthly drop in afternoon at the hall in Whiting Street. As friends come together to chat, work on their latest craft project or have a game of Crib or Scrabble, there is always someone on hand to brighten your day. Tea and cakes are served during the afternoon. Join Jacky with making fun Christmas tree decorations. Oddfellows Hall, 85 Whiting Street, Bury St Edmunds, Suffolk IP33 1NX.

2023
13 September
11 October

15 November
2024
17 January

Kurling Afternoon

Last Wednesday



1.30pm



Members £2
Guests £5



Kurling is a fun way to exercise the body and mind while at the same time having fun with friends. We are a lively but friendly bunch and always ready to welcome new members to this afternoon of fun. Cuppa and cakes are included. Oddfellows Hall, 85 Whiting Street, Bury St Edmunds, Suffolk IP33 1NX.

2023:
25 October
29 November

2024
31 January
21 February

Cuppa and Friendship - Newmarket

First Thursday



11am



Cost of a cuppa



Come join us for our monthly coffee morning held at Heath Court Hotel (Best Western) Newmarket. Purchase a cuppa and join us. We meet from 11am onwards for a lovely morning catch up. Heath Court Hotel, Moulton Road, Newmarket CB8 8DY.

2023
7 September
5 October
2 November

2024
4 January
1 February

Coffee with Friends Brandon

Second Friday



11am



Cost of a cuppa



We are a very sociable and friendly bunch of people and would welcome all members old and new to join us at our regular coffee morning in Brandon. We meet on the second Friday of the month at Tillys Tearoom, from 11am onwards. All that is needed is for you to purchase a drink and join our table. Tilly's Tearoom, The Old Five Bells, 15 Market Hill, Brandon, Suffolk IP27 0AA.

2023
8 September
13 October
10 November

8 December
2024
12 January
9 February

Contact Jacky on 01284 755068 for more details.

Regular Event in Gipping

Lunch Club Stowmarket



10.30am



£6.50



Every Monday

The Lunch Club which will generally run every Monday except Bank Holidays and is in Association with Red Gables. The door opens at 10.30am, members will be served tea, coffee or a squash on arriving. There will be a quiz, bingo or a speaker. The two course lunch is served around midday. The Redwood Community Centre, Ipswich Road, Stowmarket, Suffolk IP14 1BE. To book please contact 01449 673947 or contact the Social Secretary. Bookings must be made seven days in advance of when you wish to attend.

September 2023 – Friendship Month

SAT
02

**Camden Market and
Thames River Cruise**
Castle Lodge



9.30am



Members £25
Guests £30



A day out in London. Travelling by coach to the vibrant Camden Market for shopping and lunch before boarding the Jenny Wren narrow boat for a scenic trip on the Thames. This is a lovely part of the river taking us past London Zoo to little Venice and back. Let's hope we have the usual good weather for a relaxing day out. Marks Tey Hotel, London Road, Copford CO6 1DU. Contact Diana on 01206 330962.

ODDFELLOWS FRIENDSHIP MONTH

1 - 30 SEPTEMBER



TUES
05

**Make Do and
Mend with Amanda
Sutherland**
St Edmundsbury Lodge



10am



Free



With the cost of living going up 'Recycling' has become the new buzz word but for many of us it's an everyday thing. Join Amanda as she takes us on a journey of repairing and up cycling clothing in today's throw away society. A hot cuppa and biscuits will be served. Oddfellows Hall, 85 Whiting Street, Bury St Edmunds, Suffolk IP33 1NX. Contact Jacky on 01284 755068.

September 2023 – Friendship Month

ODDFELLOWS FRIENDSHIP MONTH

1 - 30 SEPTEMBER



TUES
05

Fish and Chips by the Sea Gipping Lodge



9.30am



Members £22
Guests £27



FRIENDSHIP
MONTH
EVENT

Join the fun

Travel by coach with us from Stowmarket for, fish and chips by the sea at Floras Tea Rooms in Dunwich. We will leave Red Gables at 9.30am and spend two hours shopping on the way at Snape Maltings, view and purchase at your leisure the various craft and goodies on offer. There will be a selection of meals available including vegetarian at the tea rooms with a dessert and tea or coffee included. Dunwich, Beach Road, Dunwich IP17 3EN. This event is now fully booked, check for cancellations. Contact David on 07736 777197.

THURS
07

Newmarket Friendship Coffee Morning St Edmundsbury Lodge



11am



Free



Come join us as we celebrate Friendship Month in the Newmarket area. This month we will be meeting at Heath Court Hotel (Best Western) from 11am onwards. This event is free and open to all, so why not pop along and bring a friend. Best Western Heath Court Hotel, Moulton Road, Newmarket, Suffolk CB8 8DY. Contact Jacky on 01284 755068.

FRIENDSHIP
MONTH
EVENT
Invite a friend

FRI
08

Brandon Friendship Coffee Morning St Edmundsbury Lodge



11am



Free



Come join us as we continue to celebrate 'Friendship Month'. This time at Tilly's Tea Room. We meet from 11am onwards and is open to all. Bring a friend and make new ones at the same time. This event is free. Tilly's Tearoom, The Old Five Bells, 15 Market Hill, Brandon, Suffolk IP27 0AA. Contact Jacky on 01284 755068.

FRIENDSHIP
MONTH
EVENT
Join the fun



September 2023 – Friendship Month

FRI 08 Music from the Swinging 60s with Barrie and Nikki St Edmundsbury Lodge

 2pm

 Free



Enjoy an afternoon of live music with Barrie and Nikki as they take us back to the swinging 60s. With Barrie's experience of performing with local bands since 1960 and Nikki's with local amateur dramatics it promises to be an entertaining afternoon. Oddfellows Hall, 85 Whiting Street, Bury St Edmunds, Suffolk IP33 1NX. Contact Jacky on 01284 755068.



MON 11 Play Their Cards Right Gipping Lodge

 7pm

 Free



Gipping social member know how to play their cards right. A fun evening with our light hearted take on the TV quiz game show Play Your Cards Right by Bruce Forsyth. Played in teams, answer the question right for a chance at selecting 'High or 'Low' or 'Stick'. There's nothing for a pair. We will open the door at 7pm and finish at 9pm at Redwood Community Centre. A light buffet will be served and a raffle held to support this, donated prizes would be welcome. Booking is not required. The Redwood Community Centre, Ipswich Road, Stowmarket, Suffolk IP14 1BE. Contact David on 01206 330962.

WED 13 Friendship Drop In Afternoon St Edmundsbury Lodge

 1.30pm

 Free



Invite a friend and join us for an afternoon of social activity. Whether it's your latest craft project, a game of Scrabble or Crib. Enjoy with a cuppa and cake, such a great way to spend an afternoon. Oddfellows Hall, 85 Whiting Street, Bury St Edmunds, Suffolk IP33 1NX. Contact Jacky on 01284 755068.



WED 13 Charlie and The Dig Babergh Lodge

 7.30pm

 Free



Charlie Haylock was personally chosen by Ralph Fiennes to be the dialect coach for the Netflix film 'The Dig'. This will be a fascinating talk about Charlie's experiences preparing Ralph and the cast for their roles. As this is Friendship Month, why not being a friend along who would also enjoy this speaker. The Masonic Hall, North Street, Sudbury, Suffolk CO10 1NA. Contact Helen on 07876 710053.

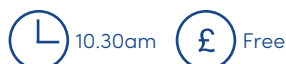
Image by Larry Horricks/Netflix©2021

September 2023 – Friendship Month

ODDFELLOWS FRIENDSHIP MONTH 1 - 30 SEPTEMBER



THURS 14 **Friendship Coffee Morning** Castle Lodge



A change to the normal quiz format. One of our members has kindly produced a power point quiz for us to enjoy. As September is Friendship Month there is the opportunity to bring a friend and introduce them to Oddfellowship. Castle Methodist Church, Maidenburgh Street, Colchester CO1 1TT. Contact Diana on 01206 330962.

WED
20

Tasty Taster Session Friendship Cream Tea St Edmundsbury Lodge



Our Tasty 'Taster Session' is open to all. Join us for an

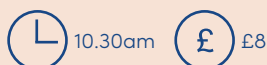


afternoon of laughter, food and friendship. Come along and find out what we are all about over a cuppa, scone, jam and cream. This is a free event but booking is essential as places are limited. Book by Tuesday 5 September 2023. Oddfellows Hall, 85 Whiting Street, Bury St Edmunds, Suffolk IP33 1NX. Contact Jacky on 01284 755068.



WED
20

Bring a friend to Cressing Temple Barns Babergh Lodge



Why not join us and experience a piece of history at the 13th century, Knights Templar Barns and enjoy a guided tour of the site and buildings. Then the time is your own to relax and take in the surroundings. You could try the Tiptree Tea Room which serves an extensive menu, or maybe choose to stock up on reasonably prices perennials, herbs and wallflowers from the Cressing Temple Shop. This is the idea place to bring a friend to share the visit with you. We will meet at the venue. Car sharing may be possible. Book by Wednesday 30 August 2023. Cressing Temple Barns, Witham Road, Cressing, Braintree CM77 8PD. Contact Helen on 07876 710053.

September 2023 – Friendship Month

SAT
23

Friendship Month Garden Party Gipping Lodge



2pm



Free



The Gipping Annual Friendship Open Garden Party will take place at Red Gables from 2pm to 5pm and is open to members and their friends. Entry is free and includes tea, or coffee, or squash and a cake. We have planned a magic show to open, which will include balloon modelling. This will be followed by musical entertainment. There is limited access, parking on-site and bookings will be necessary. The afternoon will close with a raffle, with the proceeds being donation to the Oddfellows Sherring Life Boat appeal. Please bring a garden chair or sit on the grass. The Redwood Community Centre, Ipswich Road, Stowmarket, Suffolk IP14 1BE. Please book via David on 07736 777197 by Tuesday 5 September 2023.

TUES
26

Cinema Afternoon Castle Lodge



2pm



Members Free
Guests £3



Back by popular demand. The Oddie's cinema experience. A popular and easy to watch film on the church hall's big screen. Cinema snacks and tea or coffee will be served. Relax and enjoy the film. Castle Methodist Church, Maidenburgh Street, Colchester CO1 1TT. Contact Diana on 01206 330962.

WED
27

Art with Vernon Lever Babergh Lodge



10.30am



Free



Vernon Lever, a local self taught watercolour artist, will demonstrate how he produces one of his landscape paintings, while talking and answering any questions we might have. He is well known for capturing local scenes in Suffolk. A selection of Vernon's paintings will be available to buy. The Masonic Hall, North Street, Sudbury, Suffolk CO10 1NA. Contact Helen on 07876 710053.

Join the fun in Friendship Month

Make someone's day and invite them along to share the friendship fun

All welcome

ODDFELLOWS
FRIENDSHIP MONTH
1 - 30 SEPTEMBER



Make friends with the Oddfellows



To see what's on and find out more about Friendship Month visit www.friendshipmonth.com

September 2023 October

WED
27

Kurling with Friends St Edmundsbury Lodge



1.30pm



Free



Come join us for our final event of 'Friendship Month' – Kurling with friends. We have a very relaxed approach to this afternoon of fun, but at the same time we are conscious of the fact that the exercise is great for our physical and mental wellbeing. This event is free and open to all so now is the time to have a go. We play at the Oddfellows Hall, from 1.30pm to 3.30pm. Oddfellows Hall, 85 Whiting Street, Bury St Edmunds, Suffolk IP33 1NX. Contact Jacky on 01284 755068.



WED
04

Wednesday Walkers Castle Lodge



11.30am



Free



A short walk meeting in the car park off Stonham Street, Coggeshall. A circular walk around Coggeshall with some road walking to start. Possible lunch at the Chappel Inn. This is starting a little later to meet the bus from Colchester. Car Park, Stonham Street, Coggeshall CO6 1NY. Contact Diana on 01206 330962.

October

TUES
03

You'll be blown away St Edmundsbury Lodge



10am



Members Free
Guests £2.50



Join us as Dom Mobley takes us for a journey on the history of the USA fighter planes and his experiences as a pilot. His career and passion has led him to join a group of volunteers building their own plane which one day they hope to fly. We start at 10am with a cuppa and biscuit and then Dom will take the floor. Oddfellows Hall, 85 Whiting Street, Bury St Edmunds, Suffolk IP33 1NX. Contact Jacky on 01284 755068.

SUN
08

District Annual Sunday Lunch



12 noon



£28



The District Chairman David Randall welcomes you to this years. Annual District Sunday Lunch, to be held at Ashlar House 23 Eastern Way Bury St Edmunds IP32 7AB. Commencing at midday with a welcome drink. The two course meal will be served at 1pm and will be followed by entertainment by Magician 'Magic' Matt Redmond. There will be a raffle with the proceeds going to the Oddfellows Life Boat Fund. To book please contact your Social Organiser or the District Secretary. Booking required by Friday 15 September. Contact Tony on 01284 754345.

October

MON
09

Beetle Drive Gipping Lodge



A fun evening awaits as we roll our dice and draw our beetles. Your beetle is made up in body parts equal to a value on the dice, collect all the parts and drawing them. All shapes are acceptable. The door will open at 7pm at the Redwood Centre in Stowmarket. Tea or coffee and a light buffet will be served. We will finish the evening with raffle, donations for prizes will be welcome. The Redwood Community Centre, Ipswich Road, Stowmarket, Suffolk IP14 1BE. Contact David on 01206 330962.

THURS
12

Coffee Morning and Talk Castle Lodge



The Governor. A talk by Vanessa Frake-Harris formerly head of security and operations at Wormwood scrubs. 27 years in the prison service is reflected upon in this interesting talk from dealing with celebrity and notorious criminals, busting drug rings and much more. Not to be missed. Castle Methodist Church, Maidenburgh Street, Colchester CO1 1TT. Contact Diana on 01206 330962.



WED
11

Chutneyland Babergh Lodge



We are delighted to welcome Alison Davey who will talk about how she turned her hobby into a business after having a glut of green tomatoes. Alison has a dislike of food waste and will regularly find bags of fruit or vegetables on her desk at work or receive messages from people in her village who have more quince or medlars than they know what to do with. Alison now makes about 20 different types of chutney, jam and marmalade and we will be able to sample some on the evening. If you like what you try, the products will also be available to purchase. Book by Wednesday 27 September 2023. The Masonic Hall, North Street, Sudbury, Suffolk CO10 1NA. Contact Helen on 07876 710053.



October

WED
18

Film Club Gipping Lodge



1.30pm



Free



Welcome back to our Film Club, this afternoon we have Benedict Cumberbatch and Michael Shannon in 'The Current War', a historical drama fuelled by the intense rivalry between the electricity titans Thomas Edison and George Westinghouse. A race to light up America and power the world. Arrive for tea or coffee sharp, the film will start at 1.30pm at the Redwood Centre and lasts 100 minutes. The Redwood Community Centre, Ipswich Road, Stowmarket, Suffolk IP14 1BE. Contact David on 01206 330962.

THURS
19

Eyes down look In! St Edmundsbury Lodge



1.30pm



Members £3
Guests £5



Ever played Irish Bingo? or normal Bingo? Yes, No, either way why not join us for an afternoon of fun as Barrie calls the numbers (whilst using some bingo lingo). We will be holding a draw so please, if possible, can you bring a prize. A cuppa and cake will be provided. Oddfellows Hall, 85 Whiting Street, Bury St Edmunds, Suffolk IP33 1NX. Contact Jacky on 01284 755068.

TUES
24

Afternoon Social Castle Lodge



2pm



Members Free
Guests £3



A chance to play your favourite card game with friends. Bring along your pack of cards and we will sit in groups of four to six and spend a fun afternoon playing your favourite game or learning a new one. Refreshments served and a good chance to chat to friends. Castle Methodist Church, Maidenburgh Street, Colchester CO1 1TT. Contact Diana on 01206 330962.

WED
25

Medical Detection Dogs Babergh Lodge



10.30am



Free



Come and hear about the Bio Detection Dogs, who are able to detect the odour of diseases such as Cancer, Parkinson's and Malaria. Our Medical Alert Assistance Dogs, who use their amazing sense of smell to support people with life-threatening health conditions. The Masonic Hall, North Street, Sudbury, Suffolk CO10 1NA. Contact Helen on 07876 710053.



November

WED **01** **Wednesday Walkers** **Castle Lodge**

 11am


 Free



Meet at Dovercourt Marine parade to walk along the promenade to Harwich and the Halfpenny pier. Possible lunch at Weatherspoons Dovercourt. Marine Parade, Dovercourt CO12 3JX. Contact Diana on 01206 330962.

TUES **07** **Why the Poppy?** **St Edmundsbury Lodge**

 10am

 Members Free
Guests £2.50



The Poppy and the Royal British Legion are synonymous with each other. Come listen to Michael Abbott as he talks about why this is so and what the symbol means. We start the morning off with a cuppa and catch up before Michael takes the floor from 10.30am. Poppies will be available to purchase on the day. Oddfellows Hall, 85 Whiting Street, Bury St Edmunds, Suffolk IP33 1NX. Contact Jacky on 01284 755068.



FRI **03** **Bangers and Mash Lunch** **St Edmundsbury Lodge**

 12 noon

 Members £5
Guests £8



With fireworks night just around the corner it seemed appropriate to have a 'Bangers' Sausage and Mash lunch to celebrate this notable event in our history. Join us for lunch followed by a couple of games of bingo and a draw. Booking essential as places are limited by Friday 27 October 2023. Oddfellows Hall, 85 Whiting Street, Bury St Edmunds, Suffolk IP33 1NX. Contact Jacky on 01284 755068.

WED **08** **Lord Nelson and his Suffolk Connections** **Babergh Lodge**

 2.30pm

 Free



Admiral Lord Nelson was High Steward of Ipswich, but did he ever live there? Several of the women in his life had close links to Suffolk, but which ones? Discover the answers and other surprising connections in this talk by Cathy Shelbourne about England's greatest naval hero and the county bordering his birthplace. The Masonic Hall, North Street, Sudbury, Suffolk CO10 1NA. Contact Helen on 07876 710053.

November

THURS
09

Coffee Morning and Talk Castle Lodge

⌚ 10.30am

£ Members Free
Guests £3



The Trinity House story. Come along and find out about the role of Trinity House, one of



Britain's best kept secrets. From the very first lighthouses to developing state of the art electronic navigational tools for the huge vessels we have today. An entertaining talk so come along, refreshments served. Castle Methodist Church, Maidenburgh Street, Colchester CO1 1TT. Contact Diana on 01206 330962.

MON
13

History of the Oddfellows Gipping Lodge

⌚ 7pm

£ Free



The History of the Oddfellows will cover both national and some local events, it charts the early days of Society and why members joined together to form themselves into support groups around the county. There will be a light buffet and tea, or coffee, or a squash served and a raffle to assist with cost. Donated prizes would be welcome. The door will open at The Redwood Centre at 7pm. You are welcome to bring a friend. The Redwood Community Centre, Ipswich Road, Stowmarket, Suffolk IP14 1BE. Contact David on 01206 330962.

THURS
09

The Annual Big Quiz St Edmundsbury Lodge

⌚ 2pm

£ Members Free, Guests £2



The Annual Big Quiz with Barrie and Averil is back again. Join us for an afternoon of fun as teams of up to four battle it out for a small token prize. No individual questions will be asked and a Joker can be used to double the points in a round of your choice. Nibbles will be provided and you are welcome to bring along your own drinks. So thinking caps on for team names! Oddfellows Hall, 85 Whiting Street, Bury St Edmunds, Suffolk IP33 1NX. Contact Jacky on 01284 755068.



November

THURS
16

Romford Greyhound Racing Babergh Lodge



11am



Members £28, Guests £30



Back by popular demand is a trip to the greyhound racing in Romford. We will dine at the Paddock Restaurant overlooking the winning line, which has excellent views of the racing action. A three course meal will be served while we study the form and hopefully have a few winners. The price includes return coach travel, entrance and the three course meal. Early booking for this event is recommended as this was a sell out last year. Book by 1 Wednesday November 2023. Romford Greyhound Stadium, London Road, Romford RM7 9DU. Contact Helen on 07876 710053.



WED
22

Christmas Craft with Clare Gipping Lodge



1.30pm



Members £3
Guests £5



Join friends at the Redwood Centre for a fun afternoon of Christmas craft with Clare, or take part in a



game of cards, talk with friends over a cuppa and a cake. There will be a small charge of £3 for the craft which you will need to book, or just come along and enjoy the afternoon. We will open the door at 1.13pm. The Redwood Community Centre, Ipswich Road, Stowmarket, Suffolk IP14 1BE. Booking with David on 07736 777197 by Monday 13 November 2023.

FRI
24

Wine Tasting - Hic! St Edmundsbury Lodge



2pm



Members £10
Guests £15



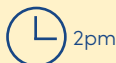
Kevin Marrable enjoys a glass or two of wine. Join him for a relaxed afternoon of fun as he guides us through the art of choosing a good wine. Both for every day or that special occasion. Places are limited so booking is essential. A £5 deposit will be required on booking. Book by Wednesday 15 November 2023. Oddfellows Hall, 85 Whiting Street, Bury St Edmunds, Suffolk IP33 1NX. Contact Jacky on 01284 755068.



November

SUN
26

District Church Service



2pm



Free



This years Annual Church serves will be held at All Saints Church Park Road Bury St Edmunds and will be in conjunction with the East Anglian Group Conference. The theme will be festive and be followed by afternoon tea in the adjoining Church Hall. Please book with your Social Organiser by Wednesday 15 November. All Saints Church, Park Road, Bury St Edmunds, Park Road, Bury St Edmunds IP33 3QW. Contact Tony on 01284 754345.



WED
29

East Anglian Air Ambulance Babergh Lodge



10.30am



Free



Peter Harrison will be our guest, to deliver a talk on the work of East Anglian Air Ambulance - a lifesaving Helicopter Emergency Service, covering Suffolk, Norfolk, Cambridgeshire, Bedfordshire and the surrounding area. East Anglian Air Ambulance needs over £17 million this year to continue running it's lifesaving service. Over the course of the morning, Peter will take you through the history of the charity, the service they are now able to provide, all the different ways they raise money and how we can help. The Masonic Hall, North Street, Sudbury, Suffolk CO10 1NA. Contact Helen on 07876 710053.

TUES
28

Ten Pin Bowling Castle Lodge



2pm



Members £7.50, Guests £10



A nice change to our social afternoons. Come along to Colchester Leisure Centre for a couple of games of bowling. It does not matter how good or bad you may be (no one can be as bad as Diana). If you do not fancy playing just come along, spectate and have a laugh and a drink which are half price! Leisure World, Cowdray Avenue, Colchester CO1 1YH . Contact Diana on 01206 330962.



December

FRI **01** **Wednesday Walkers** **Castle Lodge**

L 11am

£ Free



Meet at the Harpers Hill Lay-By. A circular walk around Nayland Village. Possible lunch at the Yew Tree, Gt Horkesley. Harpers Hill Lay-By, Harpers Hill, Nayland CO6 4NT. Contact Diana on 01206 330962.

TUES **05** **God Rest Ye Merry** **St Edmundsbury Lodge**

L 10am

£ Members Free
Guests £2.50



As we count down to the festive session join us as Linda Scoles takes us on one of her journeys. In her unique and sometimes quirky way she shares what she describes as 'Really disastrous Christmas gifts'. Her speciality! Fingers crossed the hall will be decorated. Starting with a cuppa and festive nibbles at 10am Linda will take the floor at 10.30am. Oddfellows Hall, 85 Whiting Street, Bury St Edmunds, Suffolk IP33 1NX. Contact Jacky on 01284 755068.



TUES **05** **Afternoon Social** **Christmas Entertainment** **and Buffet** **Castle Lodge**

L 2pm

£ £10



We have all heard of One Direction, but not Lost Direction. This group of men from Mersea will come along to entertain us with their songs and humour. Come along and join the fun and as it is Christmas time, we will be serving a buffet. Castle Methodist Church, Maidenburgh Street, Colchester CO1 1TT. Contact Diana on 01206 330962.

WED **06** **Christmas Lunch** **Babergh Lodge**

L 12.30pm

£ £30



Newton Green Golf Club will again be the venue for our Christmas lunch. Menus were not available at the time of going to print so more details will follow. Book by Wednesday 15 November 2023. Newton Green Golf Club, Newton Green, Sudbury CO10 0QN. Contact Helen on 07876 710053.

December

THURS
07 **Christmas Lunch**
Newmarket
St Edmundsbury Lodge

 12.30pm

 TBC



Come join us for a festive get together at Heath Court Hotel (Best Western), Newmarket as we celebrate Christmas over lunch. At the time of going to print the menu and price was not available. A £10 deposit will be required on booking. You don't have to live in the area to join us as all are welcome. Book by Thursday 23 November 2023. Heath Court Hotel, Moulton Road, Newmarket CB8 8DY. Contact Jacky on 01284 755068.



WED
13 **A Christmas Carol**
Babergh Lodge

 2.30pm

 Free



The timeless Dickens masterpiece as recited by Dr Anthony Roberts, Director of the Colchester Arts Centre. This beautiful and uplifting story has been told in so many different ways since it was originally published in 1843. In this telling, Anthony recites the story direct from the original text, the magic of the words as Dickens wrote them come direct from the page into the room. So sit back, relax and luxuriate in the characters and pictures created by one of the greatest writers of all time. The Masonic Hall, North Street, Sudbury, Suffolk CO10 1NA. Contact Helen on 07876 710053.

MON
11 **Christmas Myths and Mistletoe at Stowmarket**
Gipping Lodge

 7pm

 Free



Learn about the Jolly Old Elf and why his not impressed with Mistletoe! Why do we celebrate Christmas in the way we do, the Myths and the Mistletoe will go some way to explain the background. Twas the Night before Christmas is presented by Mike Wabe and includes a visit from St Nicholas and finishes with a poem by Clement Clarke Moore's. The door opens to this special evening at 7pm and will have a Christmas themed light buffet. There will be a raffle and time to talk. You are welcome to bring along a friend. The Redwood Community Centre, Ipswich Road, Stowmarket, Suffolk IP14 1BE. Contact David on 01206 330962.



December

WED **13** **Nosh-up at Noel** St Edmundsbury Lodge

 12 noon

 TBC



Christmas Lunch at Edmunds, West Suffolk College. At the time of going to print menus and prices were not available. Details to follow. Booking will be essential and a £10 deposit will be required on booking. Book by Tuesday 28 November 2023. Edmunds, Out Risbygate, Out Risbygate, Bury St Edmunds IP33 3RL. Contact Jacky on 01284 755068.

THURS **14** **Christmas Celebration** at Castle Lodge

 10.30am

 Free



Tales of a tour manager by Cherry Mullins. Home-made cakes will be served. Come along for an enjoyable morning. Castle Methodist Church, Maidenburgh Street, Colchester CO1 1TT. Contact Diana on 01206 330962.



MON **18** **Festive Tunes For All** St Edmundsbury Lodge

 2pm

 Free



The birth of Jesus was a very special event, but today we celebrate this occasion in many different ways. Join us for an afternoon of tunes covering all genres of music with Tyler-Kemp leading the way. We start with a glass of mulled wine to get the voice lubricated and finish with Christmas fare. A Christmas themed draw will take place and all donations will be gratefully received. Oddfellows Hall, 85 Whiting Street, Bury St Edmunds, Suffolk IP33 1NX. Contact Jacky on 01284 755068.

Booking and cancellations

Please remember the importance of early booking for all events to avoid disappointment or cancellation due to lack of support. Please note that a place is not guaranteed at any event until full payment has been received.

December

WED
20

Christmas is around the corner at Stowmarket Gipping Lodge

L 1.30pm

£ Free



Joining us this afternoon are the Old Codgers,



who will entertain us in Christmas style. You are welcome to bring friends and family to join us, the more the merrier. Join in the entertainment, sing and dance along. We will serve mince pies and hot sausage rolls with tea, or coffee, or squash. The door opens at 1.15pm to 3.15pm. Make the most of this chance to exchange you Christmas greetings as friends together. The Redwood Community Centre, Ipswich Road, Stowmarket, Suffolk IP14 1BE. Contact David on 01206 330962.

FRI
22

Christmas Prize Bingo St Edmundsbury Lodge

L 2pm

£ Free



For some, Christmas can be a lonely time of year. Don't let that be you. Your friends at the Lodge invite you to join them for an afternoon of 'Playing Card' Bingo with lucky dip prizes. This is a free event, hot beverages and festive fare will be available. Oddfellows Hall, 85 Whiting Street, Bury St Edmunds, Suffolk IP33 1NX. Contact Jacky on 01284 755068.

THURS
28

Suffolk Mystery Tour St Edmundsbury Lodge

L 1.30pm

£ Members £2
Guests £5



Join us as we travel around Suffolk on a Mystery tour of our great county and all from the comfort of a chair. Work together in teams of four to solve the clues and work out where we will end up. Refreshments will be served during the event. Oddfellows Hall, 85 Whiting Street, Bury St Edmunds, Suffolk IP33 1NX. Contact Jacky on 01284 755068.



January 2024

WED
03

Wednesday Walkers Castle Lodge

L 11am

£ Free



Starting at the Bull at Brantham car park and do a circular walk to the River Stour before returning to the Bull for lunch. The Bull, Brantham CO11 1PN. Contact Diana on 01206 330962.

January 2024

FRI
05

Twelfth Night Snack St Edmundsbury Lodge



12 noon



Members Free
Guests £2



It's twelfth night and as superstition goes, all Christmas decorations should be taken down by now. If like us your home is looking just a little bear then join us for lunch. What's on offer? Friendship, soup, roll and other festive goodies we have left over (ha ha) will be served from 12.30pm. Oddfellows Hall, 85 Whiting Street, Bury St Edmunds, Suffolk IP33 1NX. Contact Jacky on 01284 755068.

TUES
09

Hervey's of Ickworth House St Edmundsbury Lodge



10am



Members Free
Guests £3



Ickworth House, the Hervey family and parkland are right on our doorstep and for many of us it's a regular venue to walk and visit. Join Allen Burbridge from the National Trust as he brings the history alive. 10am for cuppa and catch up, 10.30am for Mr Burbridge to take the floor. Oddfellows Hall, 85 Whiting Street, Bury St Edmunds, Suffolk IP33 1NX. Contact Jacky on 01284 755068.

MON
08

Play Their Cards Right Gipping Lodge



7pm



Free



Gipping social members know how to play their cards right. A fun evening with our light hearted take on the TV quiz game show Play Your Cards Right by Bruce Forsyth. Played in teams, answer the question right for a chance at selecting 'High or 'Low' or 'Stick'. There's nothing for a pair. We will open the door at 7pm and finish at 9pm at Redwood Community Centre. A light buffet will be served and a raffle held to support this, donated prizes would be welcome. Booking is not required. The Redwood Community Centre, Ipswich Road, Stowmarket, Suffolk IP14 1BE. Contact David on 01206 330962.

WED
10

Pipe Dreams Babergh Lodge



2.30pm



Free



We would like to give a warm welcome to our member, Piper Trish Drawbridge, who has been playing the Great Highland Bagpipes for about 17 years. Trish will talk about the difficulties involved in learning, how she first got into the pipe band life, the uniforms she wears and the places she has played. She will also talk about the different styles of music which she plays and will give some examples, both on the full pipes and her recently acquired Fireside Pipes, but this is a talk and not a concert! The Masonic Hall, North Street, Sudbury, Suffolk CO10 1NA. Contact Helen on 07876 710053.

January 2024

THURS
11

Coffee Morning and Talk Castle Lodge



10.30am



Free



Hannah from Perrywoods garden centre is coming to talk to us on the history of Perrywoods. They will then make a donation to a local charity. Castle Methodist Church, Maidenburgh Street, Colchester CO1 1TT. Contact Diana on 01206 330962.



WED
17

Film Club Gipping Lodge



1.30pm



Free



Welcome back to our Film Club, this afternoon we have Hugh Grant and Sandra Bullock starring in the romantic comedy 'Two Weeks Notice'. Written and directed by Marc Lawrence. Arrive for tea or coffee and a biscuit at 1.15pm, the screen will come alive at 1.30pm. Bring a friend with you there is no charge for this event. The Redwood Community Centre, Ipswich Road, Stowmarket, Suffolk IP14 1BE. Contact David on 01206 330962.

TUES
23

Afternoon Social Castle Lodge



2pm



Free



Come along for our Scottish dancing demonstration. Join in just sit and watch. Refreshments served. Castle Methodist Church, Maidenburgh Street, Colchester CO1 1TT. Contact Diana on 01206 330962.

THURS
25

Afternoon Film Club St Edmundsbury Lodge



1.30pm



Members Free
Guests £3



New year, new events. Come along and bring a friend to our first cinema experience, although be it on the TV! - It's a popcorn included film afternoon. Doors open at 1.15pm for a cuppa and biscuit, then the lights will go down at 1.30pm for the film to start. What film I hear you ask? It's a surprise for our launch. Oddfellows Hall, 85 Whiting Street, Bury St Edmunds, Suffolk IP33 1NX. Contact Jacky on 01284 755068.



January 2024

February

WED
31

Above The Law Babergh Lodge



10.30am



Free



Adrian Blease spent 12 years flying on police helicopters and attended almost 3,000 incidents, as one of only a handful of civilian air observers working anywhere in the world. In 'Above The Law', Adrian recounts the most intriguing, challenging, amusing and downright baffling episodes in his career working for Suffolk Constabulary and the National Police Air Service. Rescuing lost walkers, chasing cars down narrow country lanes, searching for a rural cannabis factory and disrupting an illegal forest rave... they're all in a day's work. It's a side of policing that most of us never see and Adrian describes it with real compassion as he lives his dream job, indulging his love of flying, the English landscape and helping people. The Masonic Hall, North Street, Sudbury, Suffolk CO10 1NA. Contact Helen on 07876 710053.

TUES
06

The buzz word is 'Environment' St Edmundsbury Lodge



10am



Members Free
Guests £3



Join us as we welcome Sarah-Jane Clarke from FCC Ipswich as she brings to life the topic of the environment and recycling. We have been assured that her enthusiasm and knowledge makes this an unmissable event. Join us from 10am for a cuppa and catch up, with our speaker taking the floor from 10.30am. Oddfellows Hall, 85 Whiting Street, Bury St Edmunds, Suffolk IP33 1NX. Contact Jacky on 01284 755068.

WED
07

Wednesday Walkers Castle Lodge



11am



Free



Meet at the Quilters Green car park for a circular walk around the Fordham estate. Possible lunch at the Cricketers Fordham Heath. Quilters Green Car Park, Fordham CO6 3LX. Contact Diana on 01206 330962.



February

THURS
08

Coffee Morning and Talk Castle Lodge



10.30am



Free



Speaker to be arranged. Castle Methodist Church, Maidenburgh Street, Colchester CO1 1TT. Contact Diana on 01206 330962.

WED
14

The Oddfellows and Sheringham Life Boat Gipping Lodge



1.30pm



Free



Learn about the Sheringham Life Boat station from the first private life boat in 1838, onto the Oddfellows connections which started in 1962 and its continuing support today. An interesting talk detailing the most important facts. The door will open at 1.15pm at the Redwood Centre in Stowmarket. Tea or coffee and biscuits will be served. The Redwood Community Centre, Ipswich Road, Stowmarket, Suffolk IP14 1BE. Contact David on 01206 330962.

MON
12

Fish and Chips with Bingo at Stow Gipping Lodge



7pm



Members £10
Guests £11



Fish and chips with Bingo, with cash prizes. Tea, or coffee, or squash will also be served included in the entry fee of £10 for members and £11 for visitors. We will be playing a number of full houses. Booking is required by Thursday 1 February 2023. The door will open at 7pm. The Redwood Community Centre, Ipswich Road, Stowmarket, Suffolk IP14 1BE. Contact David on 01206 330962.

WED
14

Valentine Drop St Edmundsbury Lodge



1.30pm



Members £2
Guests £4



Valentines day is not just for couples, its also for friends.

Join us at the hall in Whiting Street as friends come together to chat, work on their latest craft project or

have a game of Crib or Scrabble, there is always someone on hand to brighten your day. Tea and cake is served during the afternoon . Oddfellows Hall, 85 Whiting Street, Bury St Edmunds, Suffolk IP33 1NX. Contact Jacky on 01284 755068.



February

WED 14 Love in the Animal World Babergh Lodge

L 2.30pm

£ Free



As it is Valentines Day, we had to invite Andy Moore from Colchester Zoo back to talk about love and animals.

The animal kingdom is full of amazing creatures that procreate in lots of unusual ways using lots of unusual bits of anatomy! Andy will talk through some of these animals and how life on earth is made. The Masonic Hall, North Street, Sudbury, Suffolk CO10 1NA. Contact Helen on 07876 710053.



TUES 27 Afternoon Bingo Castle Lodge

L 2pm

£ Members Free
Guests £3



Come along and have a fun afternoon of bingo to blow away the winter blues. Prizes to be won and a chance to catch up with friends in our friendly atmosphere at the hall. Tea or coffee to be served. Castle Methodist Church, Maidenburgh Street, Colchester CO1 1TT. Contact Diana on 01206 330962.

WED 28 Bingo with Fish and Chips Babergh Lodge

L 10.30am

£ Members £6.50
Guests £7



The return of our very popular Bingo with Fish and Chips



Bingo will start at 10.30am followed by fish and chips at 12 noon. Booking and payment for this event must be made by Wednesday 14 February 2024. The Masonic Hall, North Street, Sudbury, Suffolk CO10 1NA. Contact Helen on 07876 710053.

THURS 29 Leap Year Race Meet St Edmundsbury Lodge

L 1.30pm

£ Members £2
Guests £5



It's a race meet afternoon with a difference. Wind up the pigs and watch them go 'Oink, Oink'. Roll the dice and move the horses along the track towards the finishing line. You will start with a set number of tokens and the winner will be the one with the most tokens at the end. We start at 1.30pm at the Oddfellows Hall. Refreshments will be served during the afternoon. Oddfellows Hall, 85 Whiting Street, Bury St Edmunds, Suffolk IP33 1NX. Contact Jacky on 01284 755068.

District News



Bury St Edmunds and Colchester District Lodge Officers.

It's been a time of change since the last Events Diary was issued which covered The four Branches separately. With voting Taking place across the District in favour of forming a District Lodge.

The transition has involved the Secretaries and Committees, spending a considerable amount of time setting out a frame work which we could all work with as one. We thank all those concerned.

Membership should not notice too much change with each Social Lodge still having. A Social Organiser being the first point of contact. These are known as DSEO, (Development & Social Events Organiser) with myself Based at Whiting Street, Bury St Edmunds.

The District Lodge Secretary has all the Administration, Financial recording and general payments to deal with. So in line with our plan we have recruited an admin assistant who will work 15 hours a week.

Becky Molphy will start her duties early in September. So if you are in town please pop in and introduce yourself.

The District would like to congratulate those members of the new District committee on their appointments following the approval of the Fraternal Board in April. We would also like to thank our Chairman David Randall who retired from the Fraternal Board at the AMC held in Eastbourne in May, after serving seven years two as Chair of the Fraternal Board.

With September bring our Annual Friendship Month, the Social Lodges have lined up a Number of events across the District for you to Join in, don't forget that you can introduce a friend at these events.



District Lodge Deputies at 2023 Annual Movable Conference (AMC).



Babergh Review

Another six months has flown by and we have again enjoyed some fantastic events at Babergh.

We have visited the beautiful city of Cambridge where some of us wandered around the Universities and their grounds, while others explored the city and the array of shops.

Some members braved the weather and took part in Mark's Treasure Hunt and then enjoyed afternoon tea and others played Boules at Acton. Who knew that Babergh members were so competitive?

We were lucky enough to be invited by Ashley Cooper to visit his beautiful bluebell woods and listen to his talk on the local area and who could forget our second trip to Yum Yum Tree Fudge. Certainly not our waistlines!



Members enjoying one of our speakers, Vanessa Frake-Harris.

Our speakers have been interesting and I think we have all learnt a lot about their subjects. Kate from Beach Bonkers brought many things that had been found from her beachcombing and it was great fun guessing what they were. Vanessa Frake-Harris enthralled us with her talk about her career as a prison governor, while Mike Wabe took us back in time to experience life and death in a Victorian Goal. We learnt what goats really eat when local goat farmer Tim Fairbairn joined us and we travelled through autumn and winter in nature with photos from Roger Hance.

We have some great events lined up in the next six months and we look forward to seeing you at one very soon.



Sheltering from the rain on the Treasure Hunt.

Castle Review

Picnic in the garden with Elvis



On a lovely sunny day in June Castle members enjoyed an afternoon in a beautiful garden in Bentley. There was entertainment by Scott who was an Elvis tribute act. He had a wonderful voice and played all the Elvis favourites while members relaxed in the shade and also enjoyed a buffet. A great time was had by all with some getting up to dance on the dance lawn!



Day out at Sandringham



Over 50 members enjoyed a coach trip to Norfolk to enjoy a day at Sandringham. The weather was once again kind and everyone enjoyed strolling at around the beautiful gardens as well as seeing the very homely interior of Sandringham house. There was time for lunch and a chance to purchase items from the gift shop.



Gipping Review

We have arranged a full programme of events spread across a number days and times, most of the events you are able to bring a friend to join us and find out more about what we have to offer.

Events continue to include Lunch & Better Balance Clubs in association with Red Gables who we are pleased to continue to sponsor. Together with Craft, Talks, Games, Quizzes, demonstrations, outings and District wide events.

Please remember it is still essential to book some visits & events where transport is provided or meals are served. If you would like to attend the regular Lunch club on Monday's please book with Jackie at Red Gables on

01449 673947 or participate in one of the better balance classes now available on Monday's 2.30pm to 3.30pm and Thursday's 2pm to 3pm please make your booking with the instructor Becky on 07734 414151. For all other bookings or enquiries please contact the DSEO.

We would like to thank and recognise our team of volunteers and everyone who has helped to maintain contact and support for our members. We know that this means so much too so many members. We would like to thank Marilyn who has retired as a Care and Welfare Officer after many years of supporting others. If you would like to support other members or volunteer in any way at the social Lodge please contact David.





St Edmundsbury Review

Wow where does the time go?

Six months have flown by with a blink of an eye. (I must be getting older ha ha). Our social lodge has continued to provide a varied calendar of events with talks, lunch time dining, ten pin bowling, coffee morning at Brandon and Newmarket plus coach trips out.

Our trip to Ely saw us take a small boat trip on the river while enjoying the wonderful sunshine. Cromer was a beautiful day by the sea with members being entertained at the end of the pier show.

But for me the highlight event was back in May. The coronation of a new monarch is a momentous occasion and we Oddfellows felt that it must be celebrated.

So what better way than a good old-fashioned 'street party' all be it inside just in case it rained.

Much noise and laughter could be heard as friends came together and raised a 'tea cup' to His Royal Highness King Charles



3rd and Her Royal Highness Queen Consort Camilla.

The theme was red white and blue. Your volunteer social committee had spent the morning decorating the hall, laying out the tables and pumping up balloons.

So a big thank you must go out to them for all their hard work and to you the members for hopping on board with the theme.

I look forward to see you all over the next six months.

Yours in friendship, Jacky

Famous Female Sports Personalities Quiz

Answers on the last page of the At a glance section

		
1.	2.	3.
		
4.	5.	6.
		
7.	8.	9.
		
10.	11.	12.

Annual conference returns to Eastbourne



Conducting important business in Eastbourne.

The May sun shone on the south coast as members from up and down the UK converged on the seaside town for the Society's annual conference. A highlight in the Oddfellows' calendar, the Annual Movable Conference (AMC) is a chance for members to catch up, reflect on the previous year, and discuss and vote on how the Society is run, as well as welcome the new Grand Master (Chairman) – Vale of York's Barbara Needham.

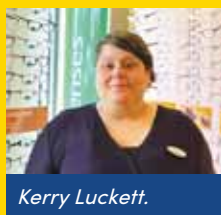
Hosted by Brighton and Sussex Oddfellows, there were a number of social activities in the schedule too. Before business got underway, members and the public were treated to another fantastic performance by Oddfellows Brass – a high point for many each year. Other events held throughout the week included the black and white-themed welcome evening, a church service where remembrance wreaths were laid, a day trip to Rye, a bowls tournament, and the Farewell Dance.



Members enjoyed the Roy Harmer Bowls Tournament.

Apprenticeship Educational Award Winner

Kerry Luckett, from Coventry Godiva Oddfellows, has been chosen as the latest recipient of an Oddfellows Apprenticeship Educational Award.



Kerry Luckett.

Kerry, who says she is “very honoured” to have received the award, will use the money to buy a new laptop to help with

the classroom elements of her Optical Assistant course with Specsavers.

The Oddfellows has been backing its members who choose to undertake an apprenticeship since 2017 by providing selected applicants with a £250 non-refundable grant to go towards their studies.

Find out more about the Educational Awards by visiting
www.oddfellows.co.uk/educational-awards

Members updated on HA Andrews Memorial Fund project



Left to right: Professor Edd James, the Oddfellows' CEO Jane Nelson, Nur Zainal, and Immediate Past Grand Master (Past Chairman) David Ogden.

The recipients of the HA Andrews Memorial Fund have described the honour they feel and explained how the Oddfellows' backing is fundamental to what they do.

Nur Zainal, a PhD student at the University of Southampton whose studies are being sponsored by the Fund, and one of the leaders of the research, Professor Edd James, came to the Society's annual conference in Eastbourne in May to discuss their project's progress.

The first year has been spent teaching Nur the skills she will need to carry out the research. She described the funding as "essential" and said she was honoured to receive the Oddfellows' backing.

Edd added: "Funding is shrinking, so the Oddfellows' ability to have this funding means that we can do these projects.

"This could be a step to going into clinical trials and getting much bigger sources of

funding to then take what Nur identifies and finds out during her PhD to patients and clinics in the future."

In 2022 the Centre for Cancer Immunology was awarded £100,000, which will be split over three years. The research team is looking into a specific gene which it is believed can be manipulated to target cancer cells in a new vaccine. If successful, this could profoundly change outcomes for patients with cancer, particularly lung, breast, head and neck, oesophageal and bladder cancers.

The HA Andrews Memorial Fund was created in 1971 to honour a remarkable Society Secretary, Herbert Arthur Andrews. It provides financial support over a two or three year period to a UK project or organisation involved in, or conducting, medical research. To date, thanks to generosity of individuals and Branches, it has donated £1,214,000.



Nur Zainal addresses AMC.

Find out more about the HA Andrews Memorial Fund at www.oddfellows.co.uk/ha-andrews

Five stars shone at the 2023 Making a Difference Awards



This year we were privileged to recognise five of our wonderful members with a Making a Difference Award during a ceremony at our annual conference.

Sue Davies Cleveland and Durham Working in the Spirit of Mutuality

This award recognises Sue's embodiment of the ethos of the Society. She joined the Oddfellows after her husband died in 2004, and within just three months of becoming a member she had already volunteered to write the Branch's newsletter.



Sue went on to organise a popular luncheon club and has helped out at a variety of other social events and on the Committee of Management.

"Oddfellows has been a lifeline to me because I have made so many new friends since joining. I have had so many new experiences and learned so much," said Sue.

"With the Oddfellows, you are never alone for long. You are made welcome at any event."

Keith and Margaret Glanville Derby Derwent Valley Achieving Together

With more than 120 years of membership between them, husband and wife, Keith



and Margaret Glanville, topped the 'Achieving Together' category for their team effort to significantly improve the lives of other members and make their Branch and the Society the best they can be.

Both have served in various roles at the Derby Derwent Valley Branch, from volunteering to both becoming Provincial Grand Master (District Chairman) – Keith twice!

Margaret described how they enjoy what they do and they were both in "absolute disbelief" when they found out. Keith added: "I've been around the block a bit and I wouldn't have missed Oddfellowship for the world."

Karen Dyke Thames and Kennet Giving a Helping Hand

Branch Secretary at Thames and Kennet, Karen frequently goes way beyond the role's expectations. She is also a welfare visitor, providing a friendly face while checking in on fellow members, often in her own time.

She is also known to give members lifts to appointments and hospital visits, and is always just a phone call away if she is needed.

Karen described working for the Oddfellows as "more than just a job", adding: "You can do a nine-to-five but for me it's more than that. It's about making my members happy and being there when they need me."



Marilyn Hayward Thames and Kennet Enriching Lives Socially

This award celebrates Marilyn's contributions to the running of Thames and Kennet Branch's social events.

Marilyn moved to Reading from Sidcup to be closer to her son when her husband died, which she described as a "big step to make".

After trying a number of social groups without much success, she then discovered the Oddfellows.

She said: "I've tried to make people feel welcome and let them know that we want to see them again. That often doesn't happen at other places. You feel like you belong here."



CEO of the Oddfellows, Jane Nelson, said: "Congratulations to all this year's winners – each of you are shining examples to us all and we are lucky to have you. The contributions you have made are invaluable to the Society and our members."

Who is your local Branch star? Member nominations are now open for the 2024 awards. To find out more, visit www.oddfellows.co.uk/makingadifference.

Oddfellows Members: Do you need help?



None of us know what is around the corner...

Bury St Edmunds & Colchester District Lodge Local Care and Welfare Support

To request contact from a Welfare Visitor and local help and information about lodge benefits and benevolence contact your Social Lodge Welfare Coordinator.

Oddfellows Citizens Advice Line

Call 0800 0149 821*

(free to callers from any landline or mobile number)

Monday - Friday, 9.30am - 4.30pm

Email: oddfellows@citizensadvicemanchester.org.uk



Run by Citizens Advice for Oddfellows members, you can access free, confidential, independent advice on welfare benefits, money and debt issues, consumer problems, housing, fuel bills, employment issues and many other issues.

*The Oddfellows cannot provide legal advice and accepts no liability whatsoever for advice provided by Citizens Advice, which is an independent advice agency. If you have any queries about the advice you have received or wish to make a complaint then you should contact Citizens Advice directly. Citizens Advice operate a formal complaints process.

Care and Welfare Helpline

Call 0800 0149 822

(free to callers from any landline or mobile number)

Monday to Thursday, 9.30am - 4.30pm, Friday, 9.30am - 4pm

Email: care@oddfellows.co.uk

Run by the Oddfellows Care and Welfare Department, you can access information and guidance on issues such as accessing health and care services, supported housing, support for carers, and planning for later life. The helpline will try and identify any Oddfellows benefits or services in the community which may be of help to you.

**Visit our website page at www.oddfellows.co.uk/benefits/care
for care and welfare information**

EDCWA50223

At a glance

September 2023 - Friendship Month

● Sat 2	Camden Market and Thames River Cruise (Castle)	9.30am
● Mon 4	Lunch Club Stowmarket (Gipping)	10.30am
● Tues 5	Make Do and Mend with Amanda Sutherland (St Edmundsbury)	10am
● Tues 5	Fish and Chips by the Sea (Gipping)	9.30am
● Thurs 7	Newmarket Friendship Coffee Morning (St Edmundsbury)	11am
● Fri 8	Brandon Friendship Coffee Morning (St Edmundsbury)	11am
● Fri 8	Music from the Swinging 60s with Barrie and Nikki (St Edmundsbury)	2pm
● Mon 11	Lunch Club Stowmarket (Gipping)	10.30am
● Mon 11	Play Their Cards Right (Gipping)	7pm
● Wed 13	Friendship Drop In Afternoon (St Edmundsbury)	1.30pm
● Wed 13	Charlie and The Dig (Babergh)	7.30pm
● Thurs 14	Friendship Coffee Morning (Castle)	10.30am
● Mon 18	Lunch Club Stowmarket (Gipping)	10.30am
● Wed 20	Bring a friend to Cressing Temple Barns (Babergh)	10.30am
● Wed 20	Tasty Taster Session Friendship Cream Tea (St Edmundsbury)	2pm
● Sat 23	Friendship Month Garden Party (Gipping)	2pm
● Mon 25	Lunch Club Stowmarket (Gipping)	10.30am
● Tues 26	Cinema Afternoon (Castle)	2pm
● Wed 27	Art with Vernon Lever (Babergh)	10.30am
● Wed 27	Kurling with Friends (St Edmundsbury)	1.30pm

October

● Mon 2	Lunch Club Stowmarket (Gipping)	10.30am
● Tues 3	You'll be blown away (St Edmundsbury)	10am
● Wed 4	Wednesday Walkers (Castle)	11.30am
● Thurs 5	Cuppa and Friendship - Newmarket (St Edmundsbury)	11am
● Sun 8	District Annual Sunday Lunch	12 noon
● Mon 9	Lunch Club Stowmarket (Gipping)	10.30am
● Mon 9	Beetle Drive (Gipping)	7pm
● Wed 11	Drop In Afternoon (St Edmundsbury)	1.30pm

At a glance

October

● Wed 11	Chutneyland (Babergh)	7.30pm
● Thurs 12	Coffee Morning and Talk (Castle)	10.30am
● Fri 13	Coffee with Friends Brandon (St Edmundsbury)	11am
● Mon 16	Lunch Club Stowmarket (Gipping)	10.30am
● Wed 18	Film Club (Gipping)	1.30pm
● Thurs 19	Eyes down look In! (St Edmundsbury)	1.30pm
● Mon 23	Lunch Club Stowmarket (Gipping)	10.30am
● Tues 24	Afternoon Social (Castle)	2pm
● Wed 25	Medical Detection Dogs (Babergh)	10.30am
● Wed 25	Kurling Afternoon (St Edmundsbury)	1.30pm
● Mon 30	Lunch Club Stowmarket (Gipping)	10.30am

November

● Wed 1	Wednesday Walkers (Castle)	11am
● Thurs 2	Cuppa and Friendship - Newmarket (St Edmundsbury)	11am
● Fri 3	Bangers and Mash Lunch (St Edmundsbury)	12 noon
● Mon 6	Lunch Club Stowmarket (Gipping)	10.30am
● Tues 7	Why the Poppy? (St Edmundsbury)	10am
● Wed 8	Lord Nelson and his Suffolk Connections (Babergh)	2.30pm
● Thurs 9	Coffee Morning and Talk (Castle)	10.30am
● Thurs 9	The Annual Big Quiz (St Edmundsbury)	2pm
● Fri 10	Coffee with Friends Brandon (St Edmundsbury)	11am
● Mon 13	Lunch Club Stowmarket (Gipping)	10.30am
● Mon 13	History of the Oddfellows (Gipping)	7pm
● Wed 15	Drop In Afternoon (St Edmundsbury)	1.30pm
● Thurs 16	Romford Greyhound Racing (Babergh)	11am
● Mon 20	Lunch Club Stowmarket (Gipping)	10.30am
● Wed 22	Christmas Craft with Clare (Gipping)	1.30pm
● Fri 24	Wine Tasting - Hic! (St Edmundsbury)	2pm
● Sun 26	District Church Service	2pm
● Mon 27	Lunch Club Stowmarket (Gipping)	10.30am
● Tues 28	Ten Pin Bowling (Castle)	2pm
● Wed 29	East Anglian Air Ambulance (Babergh)	10.30am

At a glance

November

● Wed 29	Kurling Afternoon (St Edmundsbury)	1.30pm
-----------------	------------------------------------	--------

December

● Fri 1	Wednesday Walkers (Castle)	11am
● Mon 4	Lunch Club Stowmarket (Gipping)	10.30am
● Tues 5	God Rest Ye Merry (St Edmundsbury)	10am
● Tues 5	Afternoon Social Christmas Entertainment and Buffet (Castle)	2pm
● Wed 6	Christmas Lunch (Babergh)	12.30pm
● Thurs 7	Christmas Lunch Newmarket (St Edmundsbury)	12.30pm
● Fri 8	Coffee with Friends Brandon (St Edmundsbury)	11am
● Mon 11	Lunch Club Stowmarket (Gipping)	10.30am
● Mon 11	Christmas Myths and Mistletoe at Stowmarket (Gipping)	7pm
● Wed 13	A Christmas Carol (Babergh)	2.30pm
● Wed 13	Nosh-up at Noel (St Edmundsbury)	12 noon
● Thurs 14	Christmas Celebration (Castle)	10.30am
● Mon 18	Festive Tunes For All (St Edmundsbury)	2pm
● Wed 20	Christmas is around the corner at Stowmarket (Gipping)	1.30pm
● Fri 22	Christmas Prize Bingo (St Edmundsbury)	2pm
● Thurs 28	Suffolk Mystery Tour (St Edmundsbury)	1.30pm

January 2024

● Wed 3	Wednesday Walkers (Castle)	11am
● Thurs 4	Cuppa and Friendship - Newmarket (St Edmundsbury)	11am
● Fri 5	Twelfth Night Snack (St Edmundsbury)	12 noon
● Mon 8	Lunch Club Stowmarket (Gipping)	10.30am
● Mon 8	Play Their Cards Right (Gipping)	7pm
● Tues 9	Hervey's of Ickworth House (St Edmundsbury)	10am
● Wed 10	Pipe Dreams (Babergh)	2.30pm
● Thurs 11	Coffee Morning and Talk (Castle)	10.30am
● Fri 12	Coffee with Friends Brandon (St Edmundsbury)	11am
● Mon 15	Lunch Club Stowmarket (Gipping)	10.30am
● Wed 17	Film Club (Gipping)	1.30pm
● Wed 17	Drop In Afternoon (St Edmundsbury)	1.30pm

At a glance

January 2024

● Mon 22	Lunch Club Stowmarket (Gipping)	10.30am
● Tues 23	Afternoon Social (Castle)	2pm
● Thurs 25	Afternoon Film Club (St Edmundsbury)	1.30pm
● Mon 29	Lunch Club Stowmarket (Gipping)	10.30am
● Wed 31	Above The Law (Babergh)	10.30am
● Wed 31	Kurling Afternoon (St Edmundsbury)	1.30pm

February

● Thurs 1	Cuppa and Friendship - Newmarket (St Edmundsbury)	11am
● Mon 5	Lunch Club Stowmarket (Gipping)	10.30am
● Tues 6	The buzz word is 'Environment' (St Edmundsbury)	10am
● Wed 7	Wednesday Walkers (Castle)	11am
● Thurs 8	Coffee Morning and Talk (Castle)	10.30am
● Fri 9	Coffee with Friends Brandon (St Edmundsbury)	11am
● Mon 12	Lunch Club Stowmarket (Gipping)	10.30am
● Mon 12	Fish and Chips with Bingo at Stow (Gipping)	7pm
● Wed 14	The Oddfellows and Sheringham Life Boat (Gipping)	1.30pm
● Wed 14	Valentine Drop (St Edmundsbury)	1.30pm
● Wed 14	Love in the Animal World (Babergh)	2.30pm
● Mon 19	Lunch Club Stowmarket (Gipping)	10.30am
● Wed 21	Kurling Afternoon (St Edmundsbury)	1.30pm
● Mon 26	Lunch Club Stowmarket (Gipping)	10.30am
● Tues 27	Afternoon Bingo (Castle)	2pm
● Wed 28	Bingo with Fish and Chips (Babergh)	10.30am
● Thurs 29	Leap Year Race Meet (St Edmundsbury)	1.30pm

Famous Female Sports Personalities Quiz on page 31

- | | |
|------------------------|------------------------|
| 1. Paula Radcliffe | 7. Rebecca Adlington |
| 2. Nicola Adams | 8. Ellie Simmonds |
| 3. Jade Jones | 9. Beth Tweddle |
| 4. Charlotte Dujardin | 10. Mary Peters |
| 5. Fatima Whitbread | 11. Jessica Ennis Hill |
| 6. Tanni Grey Thompson | 12. Christine Ohuruogu |